

## Product datasheet for **TA302705**

### PGAM1 Goat Polyclonal Antibody

#### Product data:

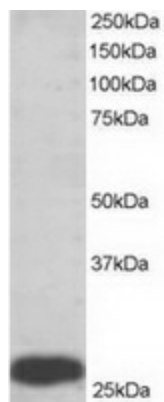
Product Type:	Primary Antibodies
Applications:	WB
Recommended Dilution:	ELISA: 1:32,000. WB: 0.5-2µg/ml.
Reactivity:	Human (Expected from sequence similarity: Mouse, Rat, Dog, Pig, Cow)
Host:	Goat
Isotype:	IgG
Clonality:	Polyclonal
Immunogen:	Peptide with sequence C-KAMEAVAAQGKAKK, from the C Terminus of the protein sequence according to NP_002620.1; NP_000281.2; NP_001025062.1.
Formulation:	Supplied at 0.5 mg/ml in Tris saline, 0.02% sodium azide, pH7.3 with 0.5% bovine serum albumin.
Concentration:	lot specific
Purification:	Purified from goat serum by ammonium sulphate precipitation followed by antigen affinity chromatography using the immunizing peptide. Supplied at 0.5 mg/ml in Tris saline, 0.02% sodium azide, pH7.3 with 0.5% bovine serum albumin. Aliquot and store at -20°C. Minimize freezing and thawing.
Conjugation:	Unconjugated
Storage:	Store at -20°C as received.
Stability:	Stable for 12 months from date of receipt.
Gene Name:	phosphoglycerate mutase 1
Database Link:	<a href="#">NP_002620</a> <a href="#">Entrez Gene 18648 MouseEntrez Gene 24642 RatEntrez Gene 477786 DogEntrez Gene 5223 Human P18669</a>
Background:	Interconversion of 3- and 2-phosphoglycerate with 2,3-bisphosphoglycerate as the primer of the reaction. Can also catalyze the reaction of EC 5.4.2.4 (synthase) and EC 3.1.3.13 (phosphatase), but with a reduced activity.
Synonyms:	HEL-S-35; PGAM-B; PGAMA



[View online »](#)

Protein Pathways: Glycolysis / Gluconeogenesis, Metabolic pathways

### Product images:



TA302705 staining (0.5ug/ml) of human liver lysate (RIPA buffer, 35ug total protein per lane). Primary incubated for 1 hour. Detected by western blot using chemiluminescence.