

## Product datasheet for **TA302699**

### VPS35 Goat Polyclonal Antibody

#### Product data:

Product Type:	Primary Antibodies
Applications:	IF, IHC, WB
Recommended Dilution:	ELISA: 1:128000. WB: 1-3µg/ml. IHC:5µg/ml
Reactivity:	Human (Expected from sequence similarity: Mouse, Rat, Cow)
Host:	Goat
Isotype:	IgG
Clonality:	Polyclonal
Immunogen:	Peptide with sequence C-SPESEGPYIYEGLLI, from the C Terminus of the protein sequence according to NP_060676.2.
Formulation:	Supplied at 0.5 mg/ml in Tris saline, 0.02% sodium azide, pH7.3 with 0.5% bovine serum albumin.
Concentration:	lot specific
Purification:	Purified from goat serum by ammonium sulphate precipitation followed by antigen affinity chromatography using the immunizing peptide. Supplied at 0.5 mg/ml in Tris saline, 0.02% sodium azide, pH7.3 with 0.5% bovine serum albumin.
Conjugation:	Unconjugated
Storage:	Store at -20°C as received.
Stability:	Stable for 12 months from date of receipt.
Predicted Protein Size:	91.5 kDa
Gene Name:	VPS35 retromer complex component
Database Link:	<a href="#">NP_060676</a> <a href="#">Entrez Gene 25479 Rat</a> <a href="#">Entrez Gene 65114 Mouse</a> <a href="#">Entrez Gene 55737 Human</a> <a href="#">Q96QK1</a>



[View online »](#)

**Background:**

This gene belongs to a group of vacuolar protein sorting (VPS) genes. The encoded protein is a component of a large multimeric complex, termed the retromer complex, involved in retrograde transport of proteins from endosomes to the trans-Golgi network. The close structural similarity between the yeast and human proteins that make up this complex suggests a similarity in function. Expression studies in yeast and mammalian cells indicate that this protein interacts directly with VPS35, which serves as the core of the retromer complex. [provided by RefSeq]. COMPLETENESS: complete on the 3' end.

**Synonyms:**

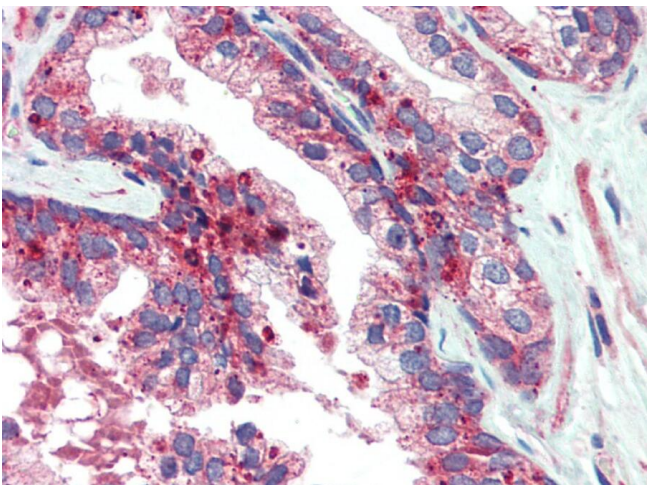
MEM3; PARK17

**Note:**

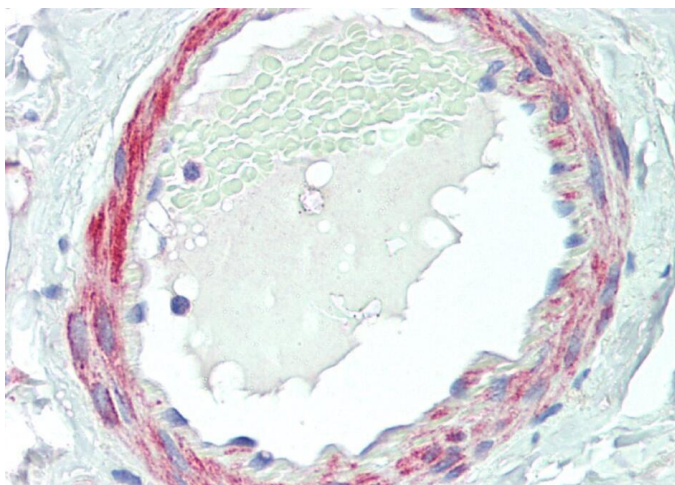
In paraffin embedded Human Testis, shows positive staining in Leydig cells, and cytoplasmic staining (dot-like) of some epithelial cells of the epididymis and of the rete testis. Data obtained with a previous batch.

**Product images:**

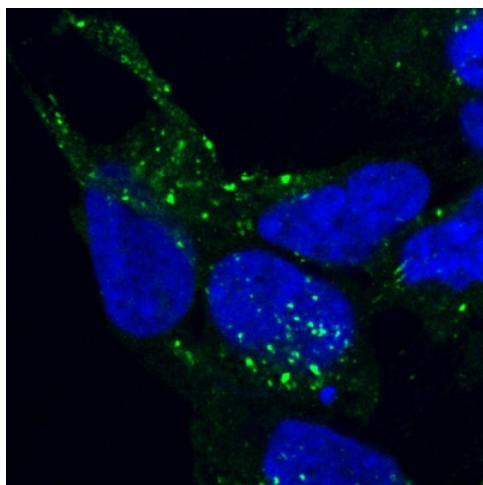
TA302699 (1ug/ml) staining of Human Brain (Cerebellum) (A) and Rat Brain (B) lysates (35ug protein in RIPA buffer). Primary incubation was 1 hour. Detected by chemiluminescence.



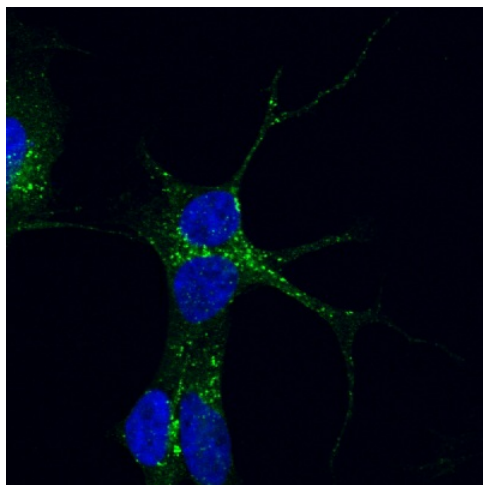
TA302699 (5ug/ml) staining of paraffin embedded Human Prostate. Steamed antigen retrieval with citrate buffer pH 6, AP-staining.



TA302699 (5ug/ml) staining of paraffin embedded Human Small Intestine. Steamed antigen retrieval with citrate buffer pH 6, AP-staining.



TA302699 staining of PFA-fixed and saponin permeabilized HEK293 and detected with FITC in confocal microscopy. Data obtained from Aarhus University Denmark, with a previous batch.



TA302699 staining of PFA-fixed and saponin permeabilized SHSY5Y and detected with FITC in confocal microscopy. Data obtained, with a previous batch, from Dr. M. Schallburg Nielsen, Aarhus University Denmark.