

Product datasheet for **TA302695**

SM22 alpha (TAGLN) Goat Polyclonal Antibody

Product data:

Product Type:	Primary Antibodies
Applications:	PEP-ELISA, WB
Recommended Dilution:	WB: 0.01-0.03 µg/ml.
Reactivity:	Human, Mouse, Rat, Rabbit (Expected from sequence similarity: Dog, Cow)
Host:	Goat
Isotype:	IgG
Clonality:	Polyclonal
Immunogen:	Peptide with sequence C-MTGYGRPRQIIS, from the C Terminus of the protein sequence according to NP_003177.2; NP_001001522.1.
Formulation:	Supplied at 0.5 mg/ml in Tris saline, 0.02% sodium azide, pH7.3 with 0.5% bovine serum albumin.
Concentration:	lot specific
Purification:	Purified from goat serum by ammonium sulphate precipitation followed by antigen affinity chromatography using the immunizing peptide. Supplied at 0.5 mg/ml in Tris saline, 0.02% sodium azide, pH7.3 with 0.5% bovine serum albumin.
Conjugation:	Unconjugated
Storage:	Store at -20°C as received.
Stability:	Stable for 12 months from date of receipt.
Predicted Protein Size:	22.4 kDa
Gene Name:	transgelin
Database Link:	NP_003177 Entrez Gene 21345 Mouse Entrez Gene 25123 Rat Entrez Gene 479424 Dog Entrez Gene 6876 Human Q01995



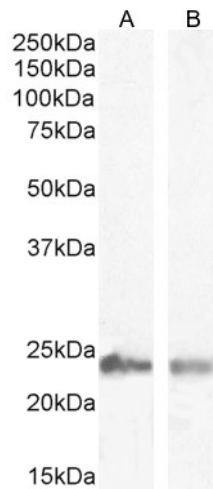
[View online »](#)

Background:

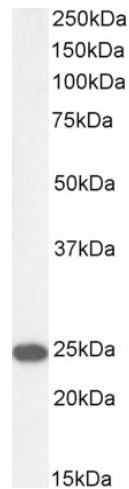
The protein encoded by this gene is a transformation and shape-change sensitive actin cross-linking/gelling protein found in fibroblasts and smooth muscle. Its expression is down-regulated in many cell lines, and this down-regulation may be an early and sensitive marker for the onset of transformation. A functional role of this protein is unclear. Two transcript variants encoding the same protein have been found for this gene. [provided by RefSeq]

Synonyms:

SM22; SMCC; TAGLN1; WS3-10

Product images:


TA302695 (0.03 μ g/ml) staining of Human Skeletal muscle (A) and (0.003 μ g/ml) Testes (B) lysate (35 μ g protein in RIPA buffer). Detected by chemiluminescence.



TA302695 (0.03 μ g/ml) staining of Mouse Skeletal muscle lysate (35 μ g protein in RIPA buffer). Detected by chemiluminescence.