

Product datasheet for **TA302673**

Leptin Receptor (LEPR) Goat Polyclonal Antibody

Product data:

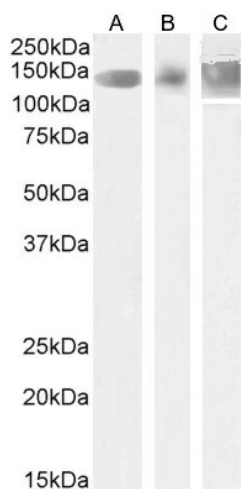
Product Type:	Primary Antibodies
Applications:	FC, IHC, PEP-ELISA, WB
Recommended Dilution:	ELISA: 1:16,000. WB: 1-3µg/ml.IHC:4µg/ml
Reactivity:	Human (Expected from sequence similarity: Dog)
Host:	Goat
Isotype:	IgG
Clonality:	Polyclonal
Immunogen:	Peptide with sequence C-TQDDIEKHQSDAG, from the internal region of the protein sequence according to NP_002294.2; NP_001003679.1; NP_001003680.1.
Formulation:	Supplied at 0.5 mg/ml in Tris saline, 0.02% sodium azide, pH7.3 with 0.5% bovine serum albumin.
Purification:	Purified from goat serum by ammonium sulphate precipitation followed by antigen affinity chromatography using the immunizing peptide. Supplied at 0.5 mg/ml in Tris saline, 0.02% sodium azide, pH7.3 with 0.5% bovine serum albumin.
Conjugation:	Unconjugated
Storage:	Store at -20°C as received.
Stability:	Stable for 12 months from date of receipt.
Predicted Protein Size:	132.3 kDa
Gene Name:	leptin receptor
Database Link:	NP_002294 Entrez Gene 450207 Dog Entrez Gene 3953 Human P48357
Background:	Leptin (LEP; MIM 164160), an adipocyte-specific hormone that regulates adipose-tissue mass through hypothalamic effects on satiety and energy expenditure, acts through the leptin receptor (LEPR), a single-transmembrane-domain receptor of the cytokine receptor family. [supplied by OMIM]
Synonyms:	CD295; LEP-R; LEPRD; OB-R; OBR
Protein Families:	Druggable Genome, Secreted Protein, Transmembrane



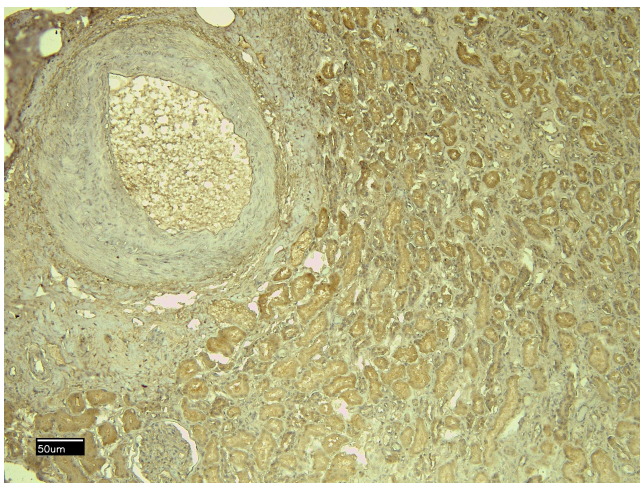
[View online »](#)

Protein Pathways: Adipocytokine signaling pathway, Cytokine-cytokine receptor interaction, Jak-STAT signaling pathway, Neuroactive ligand-receptor interaction

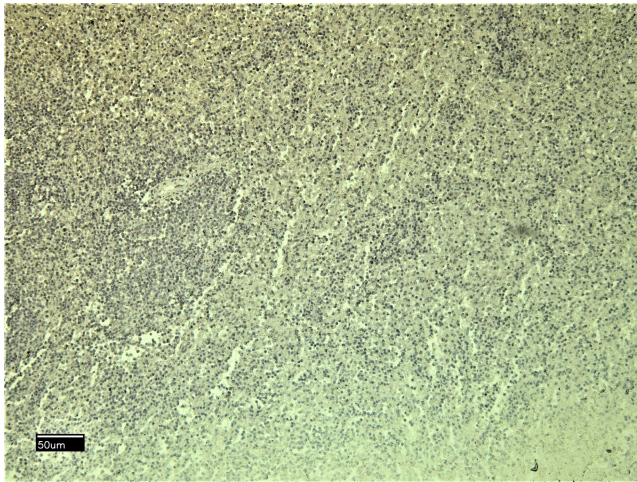
Product images:



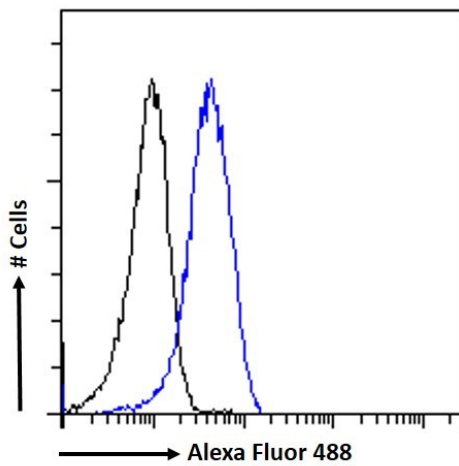
TA302673 (1.75µg/ml) staining of Human Cerebellum (A), and (1.5ug/ml) Mouse Foetal Brain (B) and Rat Brain (C) lysate (35µg protein in RIPA buffer). Detected by chemiluminescence.



TA302673 (6µg/ml) staining of paraffin embedded Human Kidney. Heat induced antigen retrieval with citrate buffer Ph 6, HRP-staining.



TA302673 Negative Control showing staining of paraffin embedded Human Kidney, with no primary antibody.



TA302673 Flow cytometric analysis of paraformaldehyde fixed K562 cells (blue line), permeabilized with 0.5% Triton. Primary incubation 1hr (10ug/ml) followed by Alexa Fluor 488 secondary antibody (1ug/ml). IgG control: Unimmunized goat IgG (black line) fo