

## Product datasheet for **TA302665**

### GRB2 Goat Polyclonal Antibody

#### Product data:

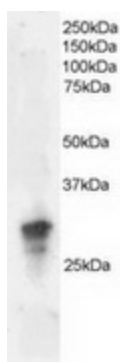
Product Type:	Primary Antibodies
Applications:	IHC, WB
Recommended Dilution:	ELISA: 1:32,000. WB: 0.05-0.15ug/ml. IHC: 0.1-0.3ug/ml.
Reactivity:	Human, Mouse (Expected from sequence similarity: Rat, Dog, Cow)
Host:	Goat
Isotype:	IgG
Clonality:	Polyclonal
Immunogen:	Peptide with sequence C-PRNYVTPVNRNV, from the C Terminus of the protein sequence according to NP_002077.1; NP_987102.1.
Formulation:	Supplied at 0.5 mg/ml in Tris saline, 0.02% sodium azide, pH7.3 with 0.5% bovine serum albumin.
Concentration:	lot specific
Purification:	Purified from goat serum by ammonium sulphate precipitation followed by antigen affinity chromatography using the immunizing peptide. Supplied at 0.5 mg/ml in Tris saline, 0.02% sodium azide, pH7.3 with 0.5% bovine serum albumin.
Conjugation:	Unconjugated
Storage:	Store at -20°C as received.
Stability:	Stable for 12 months from date of receipt.
Predicted Protein Size:	25 kDa
Gene Name:	growth factor receptor bound protein 2
Database Link:	<a href="#">NP_002077</a> <a href="#">Entrez Gene 14784 Mouse</a> <a href="#">Entrez Gene 81504 Rat</a> <a href="#">Entrez Gene 483312 Dog</a> <a href="#">Entrez Gene 2885 Human</a> <a href="#">P62993</a>



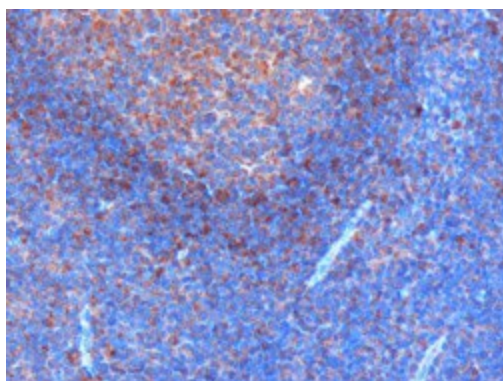
[View online »](#)

<b>Background:</b>	The protein encoded by this gene binds the epidermal growth factor receptor and contains one SH2 domain and two SH3 domains. Its two SH3 domains direct complex formation with proline-rich regions of other proteins, and its SH2 domain binds tyrosine phosphorylated sequences. This gene is similar to the Sem5 gene of <i>C.elegans</i> , which is involved in the signal transduction pathway. Two alternatively spliced transcript variants encoding different isoforms have been found for this gene. [provided by RefSeq]
<b>Synonyms:</b>	ASH; EGFRBP-GRB2; Grb3-3; MST084; MSTP084; NCKAP2
<b>Protein Families:</b>	Druggable Genome
<b>Protein Pathways:</b>	Acute myeloid leukemia, B cell receptor signaling pathway, Chemokine signaling pathway, Chronic myeloid leukemia, Colorectal cancer, Dorso-ventral axis formation, Endometrial cancer, ErbB signaling pathway, Fc epsilon RI signaling pathway, Focal adhesion, Gap junction, Glioma, GnRH signaling pathway, Insulin signaling pathway, Jak-STAT signaling pathway, MAPK signaling pathway, Natural killer cell mediated cytotoxicity, Neurotrophin signaling pathway, Non-small cell lung cancer, Pathways in cancer, Prostate cancer, Renal cell carcinoma, T cell receptor signaling pathway

### Product images:



TA302665 staining (2ug/ml) of Jurkat lysate (RIPA buffer, 35ug total protein per lane). Primary incubated for 1 hour. Detected by western blot using chemiluminescence.



TA302665 (0.3ug/ml) staining of paraffin embedded Human Tonsil. Microwaved antigen retrieval with citrate buffer pH6, HRP-staining.