

## Product datasheet for **TA302652**

### Cofilin 2 (CFL2) Goat Polyclonal Antibody

#### Product data:

Product Type:	Primary Antibodies
Applications:	WB
Recommended Dilution:	ELISA: 1:128,000. WB: 0.01-0.03µg/ml.
Reactivity:	Human, Mouse, Rat (Expected from sequence similarity: Dog, Pig)
Host:	Goat
Isotype:	IgG
Clonality:	Polyclonal
Immunogen:	Peptide with sequence C-DIKDRSTLGEK, from the C Terminus of the protein sequence according to NP_068733.1; NP_619579.1.
Formulation:	Supplied at 0.5 mg/ml in Tris saline, 0.02% sodium azide, pH7.3 with 0.5% bovine serum albumin.
Concentration:	lot specific
Purification:	Purified from goat serum by ammonium sulphate precipitation followed by antigen affinity chromatography using the immunizing peptide. Supplied at 0.5 mg/ml in Tris saline, 0.02% sodium azide, pH7.3 with 0.5% bovine serum albumin.
Conjugation:	Unconjugated
Storage:	Store at -20°C as received.
Stability:	Stable for 12 months from date of receipt.
Predicted Protein Size:	18.6 kDa
Gene Name:	cofilin 2
Database Link:	<a href="#">NP_619579</a> <a href="#">Entrez Gene 12632 Mouse</a> <a href="#">Entrez Gene 366624 Rat</a> <a href="#">Entrez Gene 490649 Dog</a> <a href="#">Entrez Gene 1073 Human</a> <a href="#">Q9Y281</a>



[View online »](#)

**Background:**

Cofilin is a widely distributed intracellular actin-modulating protein that binds and depolymerizes filamentous F-actin and inhibits the polymerization of monomeric G-actin in a pH-dependent manner. (Gillett et al., 1996 [PubMed 8800436]). Cofilin-2 is a member of the AC group of proteins that also includes cofilin-1 (CFL1) and destrin (DSTN; MIM 609114), all of which regulate actin-filament dynamics (Bamburg et al., 1999 [PubMed 10461190]; Maciver and Hussey, 2002). The CFL2 gene encodes a skeletal muscle-specific isoform (Vartiainen et al., 2002 [PubMed 11809832]) localized to the thin filaments, where it exerts its effect on actin, in part through interactions with tropomyosins (Ono and Ono, 2002 [PubMed 11901171]). [supplied by OMIM]

**Synonyms:**

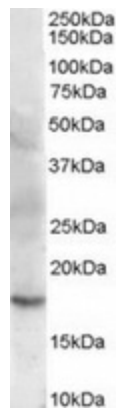
NEM7

**Protein Families:**

Druggable Genome

**Protein Pathways:**

Axon guidance, Fc gamma R-mediated phagocytosis, Regulation of actin cytoskeleton

**Product images:**

TA302652 (0.003ug/ml) staining of human muscle lysate (35ug protein in RIPA buffer). Primary incubation was 1 hour. Detected by chemiluminescence.