

Product datasheet for **TA302636**

WNT3 Goat Polyclonal Antibody

Product data:

Product Type:	Primary Antibodies
Applications:	IHC, PEP-ELISA, WB
Recommended Dilution:	ELISA: 1:16,000; WB: 1-3 ug/ml; IHC: 2-4 ug/ml
Reactivity:	Human, Mouse (Expected from sequence similarity: Rat, Dog)
Host:	Goat
Isotype:	IgG
Clonality:	Polyclonal
Immunogen:	Peptide with sequence CGRGHNTRTEKRKEK, from the internal region of the protein sequence according to NP_110380.1.
Formulation:	Supplied at 0.5 mg/ml in Tris saline, 0.02% sodium azide, pH7.3 with 0.5% bovine serum albumin.
Concentration:	lot specific
Purification:	Purified from goat serum by ammonium sulphate precipitation followed by antigen affinity chromatography using the immunizing peptide. Supplied at 0.5 mg/ml in Tris saline, 0.02% sodium azide, pH7.3 with 0.5% bovine serum albumin.
Conjugation:	Unconjugated
Storage:	Store at -20°C as received.
Stability:	Stable for 12 months from date of receipt.
Predicted Protein Size:	43271 Da
Gene Name:	Wnt family member 3
Database Link:	NP_110380 Entrez Gene 22415 Mouse Entrez Gene 24882 Rat Entrez Gene 609107 Dog Entrez Gene 7473 Human P56703



[View online »](#)

Background:

The WNT gene family consists of structurally related genes which encode secreted signaling proteins. These proteins have been implicated in oncogenesis and in several developmental processes, including regulation of cell fate and patterning during embryogenesis. This gene is a member of the WNT gene family. It encodes a protein which shows 98% amino acid identity to mouse Wnt3 protein, and 84% to human WNT3A protein, another WNT gene product. The mouse studies show the requirement of Wnt3 in primary axis formation in the mouse. Studies of the gene expression suggest that this gene may play a key role in some cases of human breast, rectal, lung, and gastric cancer through activation of the WNT-beta-catenin-TCF signaling pathway. This gene is clustered with WNT15, another family member, in the chromosome 17q21 region. [provided by RefSeq]

Synonyms:

INT4; TETAMS

Note:

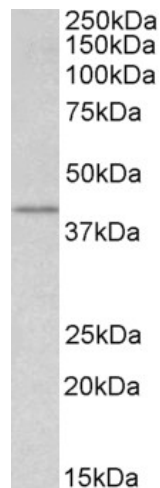
In paraffin embedded Human Breast shows cytoplasm staining in some luminal epithelial cells

Protein Families:

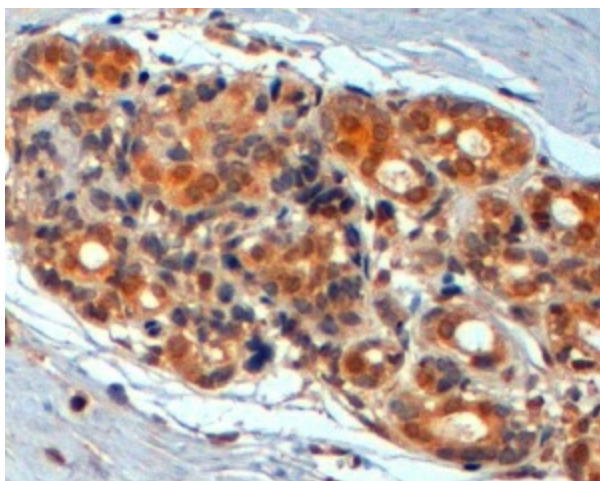
Druggable Genome, Secreted Protein, Transmembrane

Protein Pathways:

Basal cell carcinoma, Hedgehog signaling pathway, Melanogenesis, Pathways in cancer, Wnt signaling pathway

Product images:

TA302636 (1ug/ml) staining of lysate of cell line HEK293 (35ug protein in RIPA buffer). Primary incubation was 1 hour. Detected by chemiluminescence.



TA302636 (2ug/ml) staining of paraffin embedded Human Breast. Steamed antigen retrieval with citrate buffer pH 6, HRP-staining.