

Product datasheet for **TA302632**

B7H4 (VTCN1) Goat Polyclonal Antibody

Product data:

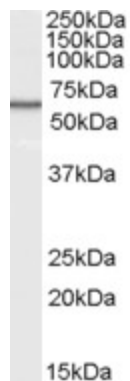
Product Type:	Primary Antibodies
Applications:	WB
Recommended Dilution:	ELISA: 1:64,000. WB: 0.3-1 µg/ml.
Reactivity:	Human (Expected from sequence similarity: Mouse, Rat, Dog)
Host:	Goat
Isotype:	IgG
Clonality:	Polyclonal
Immunogen:	Peptide with sequence C-SKGKGNANLEYK, from the internal region of the protein sequence according to NP_078902.2.
Formulation:	Supplied at 0.5 mg/ml in Tris saline, 0.02% sodium azide, pH7.3 with 0.5% bovine serum albumin.
Concentration:	lot specific
Purification:	Purified from goat serum by ammonium sulphate precipitation followed by antigen affinity chromatography using the immunizing peptide. Supplied at 0.5 mg/ml in Tris saline, 0.02% sodium azide, pH7.3 with 0.5% bovine serum albumin.
Conjugation:	Unconjugated
Storage:	Store at -20°C as received.
Stability:	Stable for 12 months from date of receipt.
Predicted Protein Size:	34503 Da
Gene Name:	V-set domain containing T cell activation inhibitor 1
Database Link:	NP_078902 Entrez Gene 242122 Mouse Entrez Gene 295322 Rat Entrez Gene 483140 Dog Entrez Gene 79679 Human Q7Z7D3
Background:	B7H4 belongs to the B7 family (see CD80; MIM 112203) of costimulatory proteins. These proteins are expressed on the surface of antigen-presenting cells and interact with ligands (e.g., CD28; MIM 186760) on T lymphocytes. [supplied by OMIM]
Synonyms:	B7-H4; B7h.5; B7H4; B7S1; B7X; PRO1291; VCTN1



[View online »](#)

Protein Families: Transmembrane

Product images:



TA302632 (0.3ug/ml) staining of Human Spleen lysate (35ug protein in RIPA buffer). Primary incubation was 1 hour. Detected by chemiluminescence.