

Product datasheet for TA302631

VPS26 (VPS26A) Goat Polyclonal Antibody

Product data:

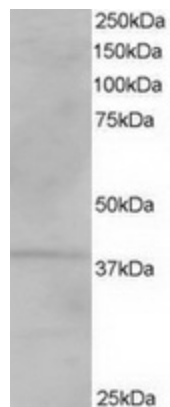
Product Type:	Primary Antibodies
Applications:	WB
Recommended Dilution:	ELISA: 1/4,000. WB: 1-2µg/ml.
Reactivity:	Human (Expected from sequence similarity: Mouse, Rat, Pig, Cow)
Host:	Goat
Isotype:	IgG
Clonality:	Polyclonal
Immunogen:	Peptide with sequence C-SPESQASAEQPEM, from the C Terminus of the protein sequence according to NP_004887.2.
Formulation:	Supplied at 0.5 mg/ml in Tris saline, 0.02% sodium azide, pH7.3 with 0.5% bovine serum albumin.
Concentration:	lot specific
Purification:	Purified from goat serum by ammonium sulphate precipitation followed by antigen affinity chromatography using the immunizing peptide. Supplied at 0.5 mg/ml in Tris saline, 0.02% sodium azide, pH7.3 with 0.5% bovine serum albumin.
Storage:	Store at -20°C as received.
Stability:	Stable for 12 months from date of receipt.
Predicted Protein Size:	41795 Da
Gene Name:	VPS26 retromer complex component A
Database Link:	NP_004887 Entrez Gene 30930 Mouse Entrez Gene 361846 Rat Entrez Gene 9559 Human
Background:	This gene belongs to a group of vacuolar protein sorting (VPS) genes. The encoded protein is a component of a large multimeric complex, termed the retromer complex, involved in retrograde transport of proteins from endosomes to the trans-Golgi network. The close structural similarity between the yeast and human proteins that make up this complex suggests a similarity in function. Expression studies in yeast and mammalian cells indicate that this protein interacts directly with VPS35, which serves as the core of the retromer complex. Alternative splicing results in multiple transcript variants encoding different isoforms.



[View online »](#)

Synonyms: HB58; Hbeta58; PEP8A; VPS26

Product images:



TA302631 staining (1ug/ml) of Human Kidney lysate (RIPA buffer, 35ug total protein per lane). Primary incubated for 1 hour. Detected by western blot using chemiluminescence.