

Product datasheet for **TA302630**

Vitamin D Binding protein (GC) Goat Polyclonal Antibody

Product data:

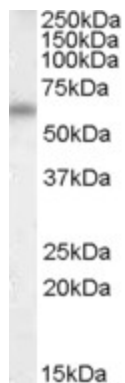
Product Type:	Primary Antibodies
Applications:	WB
Recommended Dilution:	ELISA: 1:2,000. WB: 0.1-0.3µg/ml.
Reactivity:	Human
Host:	Goat
Isotype:	IgG
Clonality:	Polyclonal
Immunogen:	Peptide with sequence CDNLSTKNSKFED, from the internal region of the protein sequence according to NP_000574.2.
Formulation:	Supplied at 0.5 mg/ml in Tris saline, 0.02% sodium azide, pH7.3 with 0.5% bovine serum albumin.
Concentration:	lot specific
Purification:	Purified from goat serum by ammonium sulphate precipitation followed by antigen affinity chromatography using the immunizing peptide. Supplied at 0.5 mg/ml in Tris saline, 0.02% sodium azide, pH7.3 with 0.5% bovine serum albumin.
Conjugation:	Unconjugated
Storage:	Store at -20°C as received.
Stability:	Stable for 12 months from date of receipt.
Predicted Protein Size:	56545 Da
Gene Name:	GC, vitamin D binding protein
Database Link:	NP_000574 Entrez Gene 2638 Human P02774
Background:	The protein encoded by this gene belongs to the albumin gene family. It is a multifunctional protein found in plasma, ascitic fluid, cerebrospinal fluid and on the surface of many cell types. It binds to vitamin D and its plasma metabolites and transports them to target tissues. [provided by RefSeq]
Synonyms:	DBP; GC; Gc-MAF; GcMAF; GRD3; HEL-S-51; VDBG; VDBP



[View online »](#)

Protein Families: Secreted Protein

Product images:



TA302630 (0.2ug/ml) staining of Liver lysate (35ug protein in RIPA buffer). Primary incubation was 1 hour. Detected by chemiluminescence.