

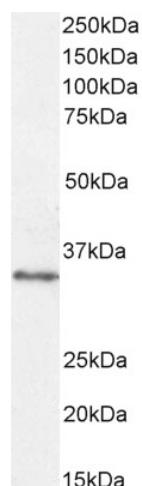
## Product datasheet for TA302629

### VDAC2 Goat Polyclonal Antibody

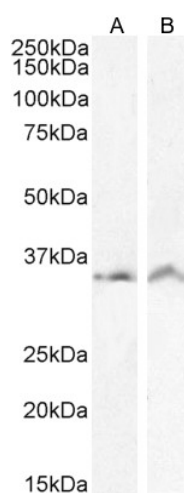
#### Product data:

Product Type:	Primary Antibodies
Applications:	IHC, PEP-ELISA, WB
Recommended Dilution:	WB: 1-3ug/ml; ELISA: 1:4000
Reactivity:	Human, Rat (Expected from sequence similarity: Mouse, Dog, Pig, Cow)
Host:	Goat
Isotype:	IgG
Clonality:	Polyclonal
Immunogen:	Peptide with sequence C-GHKVGLALELEA, from the C Terminus of the protein sequence according to NP_003366.2.
Formulation:	Supplied at 0.5 mg/ml in Tris saline, 0.02% sodium azide, pH7.3 with 0.5% bovine serum albumin.
Concentration:	lot specific
Purification:	Purified from goat serum by ammonium sulphate precipitation followed by antigen affinity chromatography using the immunizing peptide. Supplied at 0.5 mg/ml in Tris saline, 0.02% sodium azide, pH7.3 with 0.5% bovine serum albumin.
Conjugation:	Unconjugated
Storage:	Store at -20°C as received.
Stability:	Stable for 12 months from date of receipt.
Predicted Protein Size:	35191 Da
Gene Name:	voltage dependent anion channel 2
Database Link:	<a href="#">NP_003366</a> <a href="#">Entrez Gene 22334 Mouse</a> <a href="#">Entrez Gene 83531 Rat</a> <a href="#">Entrez Gene 479255 Dog</a> <a href="#">Entrez Gene 7417 Human</a> <a href="#">P45880</a>
Synonyms:	POR
Protein Families:	Druggable Genome, Ion Channels: Other
Protein Pathways:	Calcium signaling pathway, Huntington's disease, Parkinson's disease

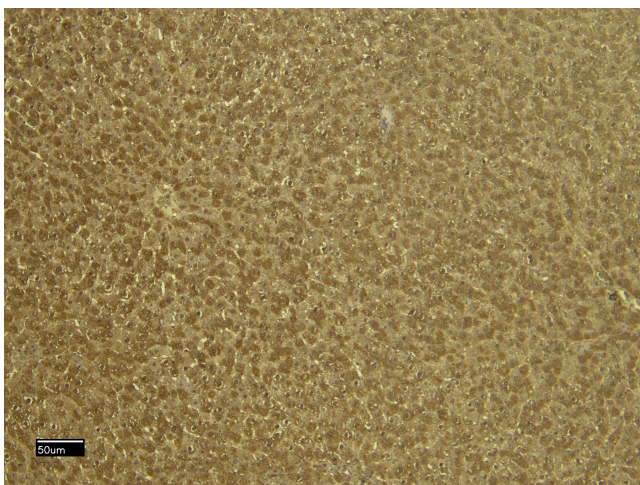

[View online »](#)

**Product images:**


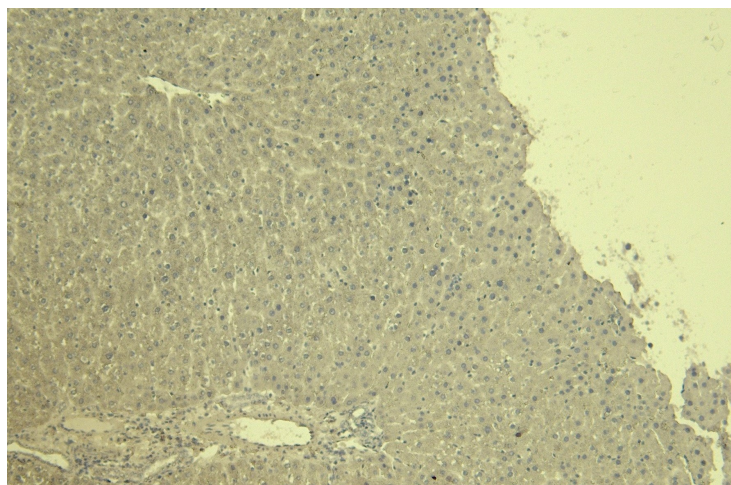
TA302629 (0.3 $\mu$ g/ml) staining of Human Cerebellum lysate (35 $\mu$ g protein in RIPA buffer). Detected by chemiluminescence.



TA302629 (1 $\mu$ g/ml) staining of CaCo-2 (A) and (0.5 $\mu$ g/ml) LNCaP (B) cell lysate (35 $\mu$ g protein in RIPA buffer). Detected by chemiluminescence.



TA302629 (6µg/ml) staining of paraffin embedded Rat Liver. Heat induced antigen retrieval with citrate buffer pH 6, HRP-staining.



TA302629 Negative Control showing staining of paraffin embedded Rat Liver, with no primary antibody.