

Product datasheet for TA302622

HNF1 beta (HNF1B) Goat Polyclonal Antibody

Product data:

Product Type:	Primary Antibodies
Applications:	ICC, PEP-ELISA, WB
Recommended Dilution:	ELISA: 1:64,000. WB: 0.1-0.3µg/ml.An
Reactivity:	Human (Expected from sequence similarity: Mouse, Rat, Dog, Pig, Cow, Zebrafish)
Host:	Goat
Isotype:	IgG
Clonality:	Polyclonal
Immunogen:	Peptide with sequence C-QAYDRQKNPSKEER, from the internal region of the protein sequence according to NP_000449.1; NP_006472.1.
Formulation:	Supplied at 0.5 mg/ml in Tris saline, 0.02% sodium azide, pH7.3 with 0.5% bovine serum albumin.
Purification:	Purified from goat serum by ammonium sulphate precipitation followed by antigen affinity chromatography using the immunizing peptide. Supplied at 0.5 mg/ml in Tris saline, 0.02% sodium azide, pH7.3 with 0.5% bovine serum albumin.
Conjugation:	Unconjugated
Storage:	Store at -20°C as received.
Stability:	Stable for 12 months from date of receipt.
Predicted Protein Size:	64952 Da
Gene Name:	HNF1 homeobox B
Database Link:	NP_000449 Entrez Gene 21410 Mouse Entrez Gene 25640 Rat Entrez Gene 610402 Dog Entrez Gene 6928 Human P35680
Background:	This gene encodes a member of the transcription factor superfamily. The encoded protein forms heterodimers with another member of this transcription factor family, HNF1A. Multiple alternatively spliced transcript variants have been described, however the biological validity all of these variants needs to be determined. [provided by RefSeq]



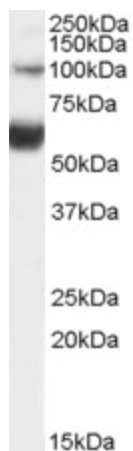
[View online »](#)

Synonyms: FJHN; HNF-1-beta; HNF-1B; HNF1beta; HNF2; HPC11; LF-B3; LFB3; MODY5; TCF-2; TCF2; VHNF1

Protein Families: Druggable Genome, Embryonic stem cells, ES Cell Differentiation/IPS, Transcription Factors

Protein Pathways: Maturity onset diabetes of the young

Product images:



TA302622 (0.1µg/ml) staining of Human Liver lysate (35µg protein in RIPA buffer). Detected by chemiluminescence.