

Product datasheet for TA302618

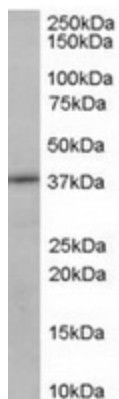
Sorbitol Dehydrogenase (SORD) Goat Polyclonal Antibody

Product data:

Product Type:	Primary Antibodies
Applications:	WB
Recommended Dilution:	ELISA: 1:64,000. WB: 0.1-1 µg/ml.
Reactivity:	Mouse (Expected from sequence similarity: Human, Rat, Dog)
Host:	Goat
Isotype:	IgG
Clonality:	Polyclonal
Immunogen:	Peptide with sequence KIMLKCDPSDQNP, from the C Terminus of the protein sequence according to NP_003095.1.
Formulation:	Supplied at 0.5 mg/ml in Tris saline, 0.02% sodium azide, pH7.3 with 0.5% bovine serum albumin.
Concentration:	lot specific
Purification:	Purified from goat serum by ammonium sulphate precipitation followed by antigen affinity chromatography using the immunizing peptide. Supplied at 0.5 mg/ml in Tris saline, 0.02% sodium azide, pH7.3 with 0.5% bovine serum albumin.
Storage:	Store at -20°C as received.
Stability:	Stable for 12 months from date of receipt.
Predicted Protein Size:	41950 Da
Gene Name:	sorbitol dehydrogenase
Database Link:	NP_003095 Entrez Gene 20322 Mouse Entrez Gene 24788 Rat Entrez Gene 487535 Dog Entrez Gene 6652 Human
Synonyms:	HEL-S-95n; SORD1
Protein Families:	Druggable Genome
Protein Pathways:	Fructose and mannose metabolism, Metabolic pathways



[View online »](#)

Product images:

TA302618 (0.1ug/ml) staining of Mouse Kidney lysate (35ug protein in RIPA buffer). Primary incubation was 1 hour. Detected by chemiluminescence.