

Product datasheet for **TA302617**

SOCS3 Goat Polyclonal Antibody

Product data:

Product Type:	Primary Antibodies
Applications:	WB
Recommended Dilution:	WB: 4-6µg/ml.
Reactivity:	Human (Expected from sequence similarity: Mouse, Rat, Dog, Pig, Cow)
Host:	Goat
Isotype:	IgG
Clonality:	Polyclonal
Immunogen:	Peptide with sequence C-PIREFLDQYDAPL, from the C Terminus of the protein sequence according to NP_003946.3.
Formulation:	Supplied at 0.5 mg/ml in Tris saline, 0.02% sodium azide, pH7.3 with 0.5% bovine serum albumin.
Concentration:	lot specific
Purification:	Purified from goat serum by ammonium sulphate precipitation followed by antigen affinity chromatography using the immunizing peptide. Supplied at 0.5 mg/ml in Tris saline, 0.02% sodium azide, pH7.3 with 0.5% bovine serum albumin.
Conjugation:	Unconjugated
Storage:	Store at -20°C as received.
Stability:	Stable for 12 months from date of receipt.
Predicted Protein Size:	28394 Da
Gene Name:	suppressor of cytokine signaling 3
Database Link:	NP_003946 Entrez Gene 12702 Mouse Entrez Gene 89829 Rat Entrez Gene 442949 Dog Entrez Gene 9021 Human O14543



[View online »](#)

Background:

This gene encodes a member of the STAT-induced STAT inhibitor (SSI), also known as suppressor of cytokine signaling (SOCS), family. SSI family members are cytokine-inducible negative regulators of cytokine signaling. The expression of this gene is induced by various cytokines, including IL6, IL10, and interferon (IFN)-gamma. The protein encoded by this gene can bind to JAK2 kinase, and inhibit the activity of JAK2 kinase. Studies of the mouse counterpart of this gene suggested the roles of this gene in the negative regulation of fetal liver hematopoiesis, and placental development. [provided by RefSeq]

Synonyms:

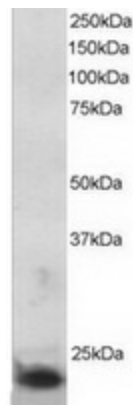
ATOD4; CIS3; Cish3; SOCS-3; SSI-3; SSI3

Protein Families:

Druggable Genome

Protein Pathways:

Adipocytokine signaling pathway, Insulin signaling pathway, Jak-STAT signaling pathway, Type II diabetes mellitus, Ubiquitin mediated proteolysis

Product images:

TA302617 staining (5ug/ml) of MOLT-4 lysate (RIPA buffer, 30ug total protein per lane). Primary incubated for 1 hour. Detected by western blot using chemiluminescence.