

## Product datasheet for **TA302613**

### HLTF Goat Polyclonal Antibody

#### Product data:

Product Type:	Primary Antibodies
Applications:	WB
Recommended Dilution:	WB: 0.2-1µg/ml.
Reactivity:	Human (Expected from sequence similarity: Mouse, Rat, Dog, Cow)
Host:	Goat
Isotype:	IgG
Clonality:	Polyclonal
Immunogen:	Peptide with sequence C-KQAKINEIRTLIDL, from the C Terminus of the protein sequence according to NP_003062.2; NP_620636.1.
Formulation:	Supplied at 0.5 mg/ml in Tris saline, 0.02% sodium azide, pH7.3 with 0.5% bovine serum albumin.
Concentration:	lot specific
Purification:	Purified from goat serum by ammonium sulphate precipitation followed by antigen affinity chromatography using the immunizing peptide. Supplied at 0.5 mg/ml in Tris saline, 0.02% sodium azide, pH7.3 with 0.5% bovine serum albumin.
Conjugation:	Unconjugated
Storage:	Store at -20°C as received.
Stability:	Stable for 12 months from date of receipt.
Predicted Protein Size:	117565 Da
Gene Name:	helicase-like transcription factor
Database Link:	<a href="#">NP_003062</a> <a href="#">Entrez Gene 20585 Mouse</a> <a href="#">Entrez Gene 295568 Rat</a> <a href="#">Entrez Gene 477106 Dog</a> <a href="#">Entrez Gene 6596 Human</a> <a href="#">Q14527</a>



[View online »](#)

**Background:**

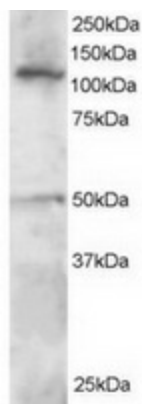
This gene encodes a member of the SWI/SNF family. Members of this family have helicase and ATPase activities and are thought to regulate transcription of certain genes by altering the chromatin structure around those genes. The encoded protein contains a RING finger DNA binding motif. Two transcript variants encoding the same protein have been found for this gene. However, use of an alternative translation start site produces an isoform that is truncated at the N-terminus compared to the full-length protein. [provided by RefSeq]

**Synonyms:**

HIP116; HIP116A; HLTF1; RNF80; SMARCA3; SNF2L3; ZBU1

**Protein Families:**

Druggable Genome, Transcription Factors

**Product images:**

TA302613 staining (0.5ug/ml) of Jurkat lysate (RIPA buffer, 30ug total protein per lane). Primary incubated for 1 hour. Detected by western blot using chemiluminescence.