

Product datasheet for **TA302610**

SIRT4 Goat Polyclonal Antibody

Product data:

Product Type:	Primary Antibodies
Applications:	IHC, PEP-ELISA, WB
Recommended Dilution:	ELISA: 1:32,000. WB 1-3µg/ml.
Reactivity:	Human, Rat (Expected from sequence similarity: Mouse, Dog, Pig, Cow)
Host:	Goat
Isotype:	IgG
Clonality:	Polyclonal
Immunogen:	Peptide with sequence SRCGELLPLIDPC, from the C Terminus of the protein sequence according to NP_036372.1.
Formulation:	Supplied at 0.5 mg/ml in Tris saline, 0.02% sodium azide, pH7.3 with 0.5% bovine serum albumin.
Concentration:	lot specific
Purification:	Purified from goat serum by ammonium sulphate precipitation followed by antigen affinity chromatography using the immunizing peptide. Supplied at 0.5 mg/ml in Tris saline, 0.02% sodium azide, pH7.3 with 0.5% bovine serum albumin.
Conjugation:	Unconjugated
Storage:	Store at -20°C as received.
Stability:	Stable for 12 months from date of receipt.
Predicted Protein Size:	38812 Da
Gene Name:	sirtuin 4
Database Link:	NP_036372 Entrez Gene 75387 Mouse Entrez Gene 304539 Rat Entrez Gene 477507 Dog Entrez Gene 23409 Human Q9Y6E7



[View online »](#)

Background:

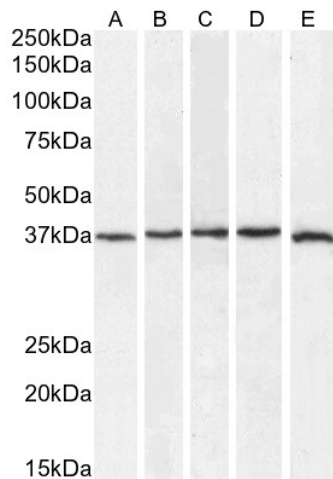
This gene encodes a member of the sirtuin family of proteins, homologs to the yeast Sir2 protein. Members of the sirtuin family are characterized by a sirtuin core domain and grouped into four classes. The functions of human sirtuins have not yet been determined; however, yeast sirtuin proteins are known to regulate epigenetic gene silencing and suppress recombination of rDNA. Studies suggest that the human sirtuins may function as intracellular regulatory proteins with mono-ADP-ribosyltransferase activity. The protein encoded by this gene is included in class IV of the sirtuin family. COMPLETENESS: complete on the 3' end.

Synonyms:

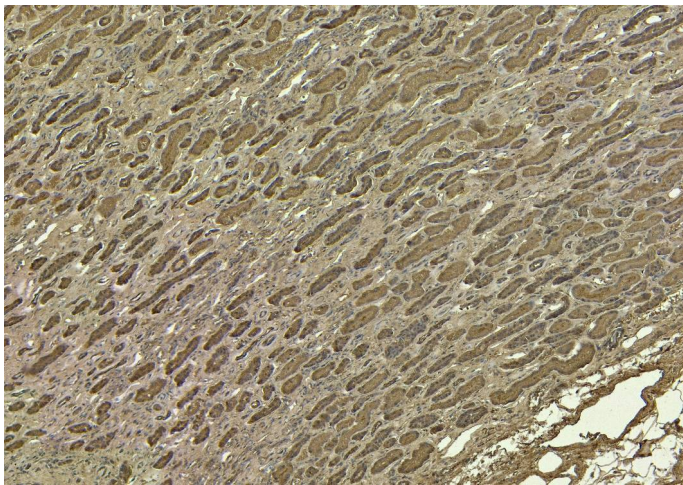
SIR2L4

Protein Families:

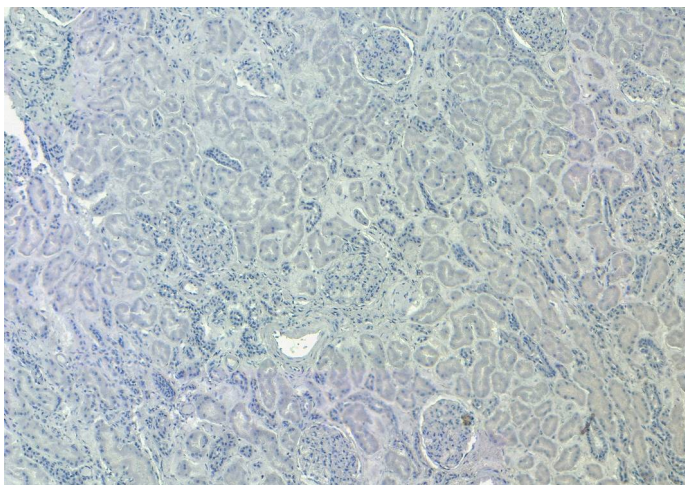
Druggable Genome, Transcription Factors

Product images:


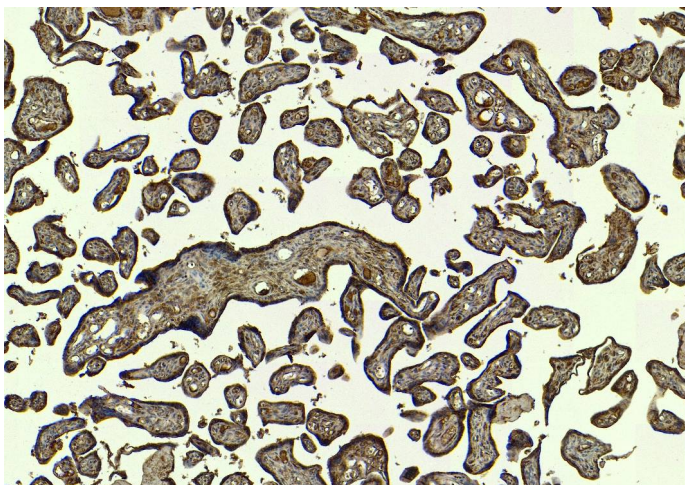
TA302610 (0.75ug/ml) staining of U937 (A), (2ug/ml) K562 (B) and (3ug/ml) U2OS (C), MCF7 (D), and U251 (E) cell lysate (35µg protein in RIPA buffer). Detected by chemiluminescence.



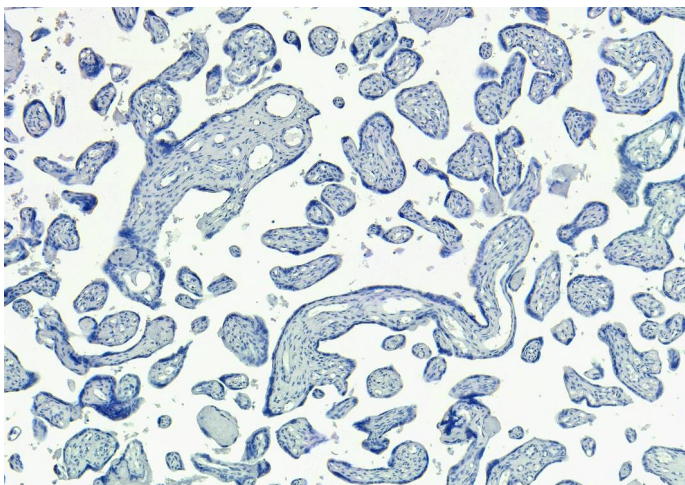
TA302610 (7µg/ml) staining of paraffin embedded Human Kidney. Heat induced antigen retrieval with citrate buffer pH 6, HRP-staining.



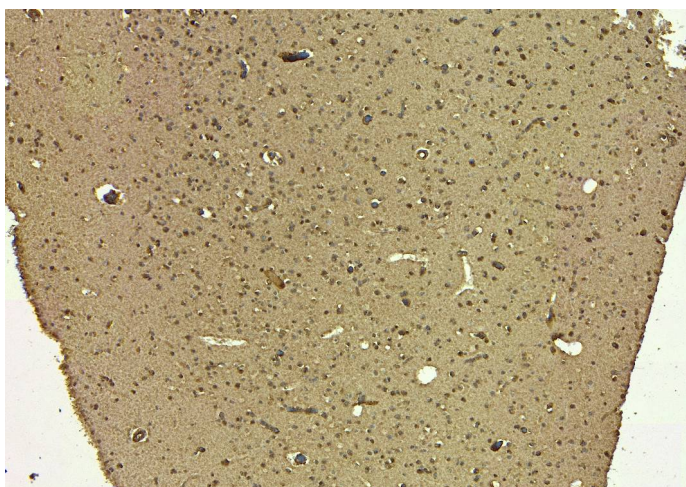
TA302610 Negative Control showing staining of paraffin embedded Human Kidney, with no primary antibody.



TA302610 (7µg/ml) staining of paraffin embedded Human Placenta. Heat induced antigen retrieval with citrate buffer Ph 6, HRP-staining.



TA302610 Negative Control showing staining of paraffin embedded Human Placenta, with no primary antibody.



TA302610 (7µg/ml) staining of paraffin embedded Human Cortex. Heat induced antigen retrieval with citrate buffer Ph 6, HRP-staining.



TA302610 Negative Control showing staining of paraffin embedded Human Cortex, with no primary antibody.