

Product datasheet for **TA302605**

SH2D1A Goat Polyclonal Antibody

Product data:

Product Type:	Primary Antibodies
Applications:	WB
Recommended Dilution:	ELISA: 1:16,000. WB: 0.3-1 µg/ml.
Reactivity:	Human (Expected from sequence similarity: Mouse, Rat)
Host:	Goat
Isotype:	IgG
Clonality:	Polyclonal
Immunogen:	Peptide with sequence C-HKRYFRKIKN, from the internal region of the protein sequence according to NP_002342.1.
Formulation:	Supplied at 0.5 mg/ml in Tris saline, 0.02% sodium azide, pH7.3 with 0.5% bovine serum albumin.
Concentration:	lot specific
Purification:	Purified from goat serum by ammonium sulphate precipitation followed by antigen affinity chromatography using the immunizing peptide. Supplied at 0.5 mg/ml in Tris saline, 0.02% sodium azide, pH7.3 with 0.5% bovine serum albumin.
Conjugation:	Unconjugated
Storage:	Store at -20°C as received.
Stability:	Stable for 12 months from date of receipt.
Predicted Protein Size:	17809 Da
Gene Name:	SH2 domain containing 1A
Database Link:	NP_002342 Entrez Gene 20400 Mouse Entrez Gene 501502 Rat Entrez Gene 4068 Human O60880



[View online »](#)

Background:

This gene encodes a protein that plays a major role in the bidirectional stimulation of T and B cells. This protein contains an SH2 domain and a short tail. It associates with the signaling lymphocyte-activation molecule, thereby acting as an inhibitor of this transmembrane protein by blocking the recruitment of the SH2-domain-containing signal-transduction molecule SHP-2 to its docking site. This protein can also bind to other related surface molecules that are expressed on activated T, B and NK cells, thereby modifying signal transduction pathways in these cells. Mutations in this gene cause lymphoproliferative syndrome X-linked type 1 or Duncan disease, a rare immunodeficiency characterized by extreme susceptibility to infection with Epstein-Barr virus, with symptoms including severe mononucleosis and malignant lymphoma. Multiple transcript variants encoding different isoforms have been found for this gene. [provided by RefSeq]

Synonyms:

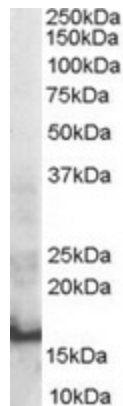
DSHP; EBVS; IMD5; LYP; MTCP1; SAP; SH2D1A; XLP; XLPD; XLPD1

Protein Families:

Druggable Genome

Protein Pathways:

Natural killer cell mediated cytotoxicity

Product images:

TA302605 staining (0.3ug/ml) of Human Thymus lysate (RIPA buffer, 30ug total protein per lane). Primary incubated for 1 hour. Detected by western blot using chemiluminescence.