

Product datasheet for **TA302603**

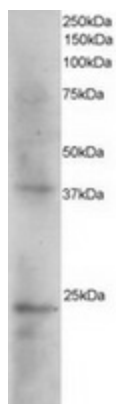
SET Goat Polyclonal Antibody

Product data:

Product Type:	Primary Antibodies
Applications:	IHC, PEP-ELISA, WB
Recommended Dilution:	WB: 1-3µg/ml.
Reactivity:	Human (Expected from sequence similarity: Cow)
Host:	Goat
Isotype:	IgG
Clonality:	Polyclonal
Immunogen:	Peptide with sequence SAPAAKVSKKELNS-C, from the N Terminus of the protein sequence according to AAC50460.1.
Formulation:	Supplied at 0.5 mg/ml in Tris saline, 0.02% sodium azide, pH7.3 with 0.5% bovine serum albumin.
Concentration:	lot specific
Purification:	Purified from goat serum by ammonium sulphate precipitation followed by antigen affinity chromatography using the immunizing peptide. Supplied at 0.5 mg/ml in Tris saline, 0.02% sodium azide, pH7.3 with 0.5% bovine serum albumin.
Conjugation:	Unconjugated
Storage:	Store at -20°C as received.
Stability:	Stable for 12 months from date of receipt.
Predicted Protein Size:	35727 Da
Gene Name:	SET nuclear proto-oncogene
Database Link:	NP_003002 Entrez Gene 6418 Human Q01105
Synonyms:	2PP2A; I2PP2A; IGAAD; IPP2A2; PHAPII; TAF-I; TAF-IBETA
Protein Families:	Druggable Genome, Phosphatase, Stem cell - Pluripotency



[View online »](#)

Product images:

TA302603 staining (2ug/ml) of Human Kidney extracts (RIPA buffer, 35ug total protein per lane). Primary incubated for 1 hour. Detected by western blot using chemiluminescence.