

Product datasheet for **TA302600**

SDHB Goat Polyclonal Antibody

Product data:

Product Type:	Primary Antibodies
Applications:	WB
Recommended Dilution:	ELISA: 1:8,000. WB: 0.03-0.1µg/ml.
Reactivity:	Human
Host:	Goat
Isotype:	IgG
Clonality:	Polyclonal
Immunogen:	Peptide with sequence C-ATYKEKKASV, from the C Terminus of the protein sequence according to NP_002991.1.
Formulation:	Supplied at 0.5 mg/ml in Tris saline, 0.02% sodium azide, pH7.3 with 0.5% bovine serum albumin.
Concentration:	lot specific
Purification:	Purified from goat serum by ammonium sulphate precipitation followed by antigen affinity chromatography using the immunizing peptide. Supplied at 0.5 mg/ml in Tris saline, 0.02% sodium azide, pH7.3 with 0.5% bovine serum albumin.
Conjugation:	Unconjugated
Storage:	Store at -20°C as received.
Stability:	Stable for 12 months from date of receipt.
Predicted Protein Size:	35254 Da
Gene Name:	succinate dehydrogenase complex iron sulfur subunit B
Database Link:	NP_002991 Entrez Gene 6390 Human P21912



[View online »](#)

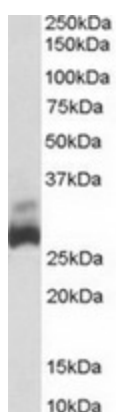
Background: Complex II of the respiratory chain, which is specifically involved in the oxidation of succinate, carries electrons from FADH to CoQ. The complex is composed of four nuclear-encoded subunits and is localized in the mitochondrial inner membrane. The iron-sulfur subunit is highly conserved and contains three cysteine-rich clusters which may comprise the iron-sulfur centers of the enzyme. Sporadic and familial mutations in this gene result in paragangliomas and pheochromocytoma, and support a link between mitochondrial dysfunction and tumorigenesis. [provided by RefSeq]

Synonyms: CWS2; IP; PGL4; SDH; SDH1; SDH2; SDHIP

Protein Families: Druggable Genome

Protein Pathways: Alzheimer's disease, Citrate cycle (TCA cycle), Huntington's disease, Metabolic pathways, Oxidative phosphorylation, Parkinson's disease

Product images:



TA302600 (0.03ug/ml) staining of Human Liver lysate (35ug protein in RIPA buffer). Primary incubation was 1 hour. Detected by chemiluminescence.