

Product datasheet for **TA302596**

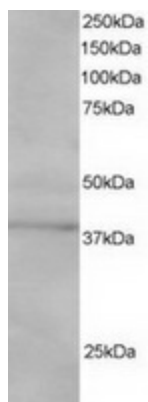
SAE1 Goat Polyclonal Antibody

Product data:

Product Type:	Primary Antibodies
Applications:	FC, PEP-ELISA, WB
Recommended Dilution:	ELISA: 1:8,000. WB: 1µg/ml.
Reactivity:	Human (Expected from sequence similarity: Dog, Cow)
Host:	Goat
Isotype:	IgG
Clonality:	Polyclonal
Immunogen:	Peptide with sequence MKGNGIVECLGPK, from the C Terminus of the protein sequence according to NP_005491.
Formulation:	Supplied at 0.5 mg/ml in Tris saline, 0.02% sodium azide, pH7.3 with 0.5% bovine serum albumin.
Concentration:	lot specific
Purification:	Purified from goat serum by ammonium sulphate precipitation followed by antigen affinity chromatography using the immunizing peptide. Supplied at 0.5 mg/ml in Tris saline, 0.02% sodium azide, pH7.3 with 0.5% bovine serum albumin.
Conjugation:	Unconjugated
Storage:	Store at -20°C as received.
Stability:	Stable for 12 months from date of receipt.
Predicted Protein Size:	42075 Da
Gene Name:	SUMO1 activating enzyme subunit 1
Database Link:	NP_005491 Entrez Gene 476425 Dog Entrez Gene 10055 Human Q9UBE0
Synonyms:	AOS1; HSPC140; SUA1; UBLE1A
Protein Pathways:	Ubiquitin mediated proteolysis



[View online »](#)

Product images:

TA302596 staining (1ug/ml) of Jurkat lysate (RIPA buffer, 30ug total protein per lane). Primary incubated for 1 hour. Detected by western blot using chemiluminescence.