

## Product datasheet for **TA302589**

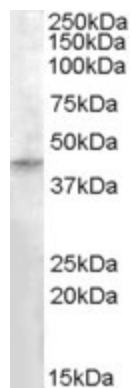
### RASSF8 Goat Polyclonal Antibody

#### Product data:

Product Type:	Primary Antibodies
Applications:	WB
Recommended Dilution:	ELISA: 1:128,000. WB: 0.3-1µg/ml.
Reactivity:	Human (Expected from sequence similarity: Mouse, Cow)
Host:	Goat
Isotype:	IgG
Clonality:	Polyclonal
Immunogen:	Peptide with sequence C-RDTERHLAPHEN, from the internal region of the protein sequence according to NP_009142.2.
Formulation:	Supplied at 0.5 mg/ml in Tris saline, 0.02% sodium azide, pH7.3 with 0.5% bovine serum albumin.
Concentration:	lot specific
Purification:	Purified from goat serum by ammonium sulphate precipitation followed by antigen affinity chromatography using the immunizing peptide. Supplied at 0.5 mg/ml in Tris saline, 0.02% sodium azide, pH7.3 with 0.5% bovine serum albumin.
Conjugation:	Unconjugated
Storage:	Store at -20°C as received.
Stability:	Stable for 12 months from date of receipt.
Predicted Protein Size:	49072 Da
Gene Name:	Ras association domain family member 8
Database Link:	<a href="#">NP_009142</a> <a href="#">Entrez Gene 71323 Mouse</a> <a href="#">Entrez Gene 11228 Human</a> <a href="#">Q8NHQ8</a>
Synonyms:	C12orf2; HOJ1



[View online »](#)

**Product images:**

TA302589 (0.3ug/ml) staining of Human Testis lysate (35ug protein in RIPA buffer). Primary incubation was 1 hour. Detected by chemiluminescence.