

Product datasheet for **TA302587**

RAB11A Goat Polyclonal Antibody

Product data:

Product Type:	Primary Antibodies
Applications:	WB
Recommended Dilution:	WB: 1-3µg/ml.
Reactivity:	Mouse (Expected from sequence similarity: Human, Rat, Cow)
Host:	Goat
Isotype:	IgG
Clonality:	Polyclonal
Immunogen:	Peptide with sequence TENKPKVQCCQNI, from the C Terminus of the protein sequence according to NP_004654.
Formulation:	Supplied at 0.5 mg/ml in Tris saline, 0.02% sodium azide, pH7.3 with 0.5% bovine serum albumin.
Concentration:	lot specific
Purification:	Purified from goat serum by ammonium sulphate precipitation followed by antigen affinity chromatography using the immunizing peptide. Supplied at 0.5 mg/ml in Tris saline, 0.02% sodium azide, pH7.3 with 0.5% bovine serum albumin.
Conjugation:	Unconjugated
Storage:	Store at -20°C as received.
Stability:	Stable for 12 months from date of receipt.
Predicted Protein Size:	28017 Da
Gene Name:	RAB11A, member RAS oncogene family
Database Link:	NP_004654 Entrez Gene 53869 Mouse Entrez Gene 81830 Rat Entrez Gene 8766 Human P62491
Background:	The protein encoded by this gene belongs to the small GTPase superfamily, Rab family. It is associated with both constitutive and regulated secretory pathways, and may be involved in protein transport. [provided by RefSeq]
Synonyms:	YL8

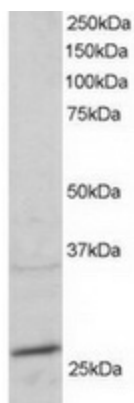


[View online »](#)

Protein Families: Druggable Genome

Protein Pathways: Endocytosis

Product images:



TA302587 staining (2ug/ml) of mouse heart lysate (RIPA buffer, 30ug total protein per lane). Primary incubated for 1 hour. Detected by western blot using chemiluminescence.