

Product datasheet for **TA302585**

PDHX Goat Polyclonal Antibody

Product data:

Product Type:	Primary Antibodies
Applications:	WB
Recommended Dilution:	WB: 0.1-1 µg/ml.
Reactivity:	Human (Expected from sequence similarity: Mouse, Rat, Dog)
Host:	Goat
Isotype:	IgG
Clonality:	Polyclonal
Immunogen:	Peptide with sequence C-KSFKANLENPIRLA, from the C Terminus of the protein sequence according to NP_003468.1.
Formulation:	Supplied at 0.5 mg/ml in Tris saline, 0.02% sodium azide, pH7.3 with 0.5% bovine serum albumin.
Concentration:	lot specific
Purification:	Purified from goat serum by ammonium sulphate precipitation followed by antigen affinity chromatography using the immunizing peptide. Supplied at 0.5 mg/ml in Tris saline, 0.02% sodium azide, pH7.3 with 0.5% bovine serum albumin.
Conjugation:	Unconjugated
Storage:	Store at -20°C as received.
Stability:	Stable for 12 months from date of receipt.
Predicted Protein Size:	57750 Da
Gene Name:	pyruvate dehydrogenase complex component X
Database Link:	NP_003468 Entrez Gene 27402 Mouse Entrez Gene 311254 Rat Entrez Gene 475942 Dog Entrez Gene 8050 Human O00330



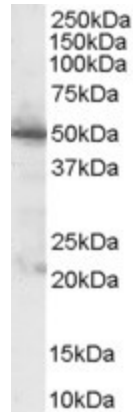
[View online »](#)

Background:

The PDHX gene encodes component X of the pyruvate dehydrogenase (PDH) complex. For a detailed description of the pyruvate dehydrogenase complex, see MIM 300502. The mammalian PDH complex differs from that in *E. coli* and from the other mammalian alpha-keto acid dehydrogenases by the presence of a 53-kD protein called protein X. Component X binds to the E3 (MIM 238331) component of the PDH complex (Robinson et al., 1990 [PubMed 2112155]; Aral et al., 1997 [PubMed 9399911]). [supplied by OMIM]

Synonyms:

DLDBP; E3BP; OPDX; PDX1; proX

Product images:

TA302585 (1 ug/ml) staining of Human Pancreas lysate (35 ug protein in RIPA buffer). Primary incubation was 1 hour. Detected by chemiluminescence.