

## Product datasheet for TA302582

### PRPF31 Goat Polyclonal Antibody

#### Product data:

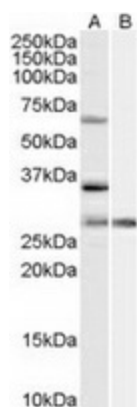
Product Type:	Primary Antibodies
Applications:	WB
Recommended Dilution:	ELISA: 1:128,000. WB: 1-3µg/ml.
Reactivity:	Human (Expected from sequence similarity: Mouse, Rat, Dog, Pig, Cow)
Host:	Goat
Isotype:	IgG
Clonality:	Polyclonal
Immunogen:	Peptide with sequence KELGNSLDKCKNNEN, from the internal region of the protein sequence according to NP_056444.2.
Formulation:	Supplied at 0.5 mg/ml in Tris saline, 0.02% sodium azide, pH7.3 with 0.5% bovine serum albumin.
Concentration:	lot specific
Purification:	Purified from goat serum by ammonium sulphate precipitation followed by antigen affinity chromatography using the immunizing peptide. Supplied at 0.5 mg/ml in Tris saline, 0.02% sodium azide, pH7.3 with 0.5% bovine serum albumin.
Conjugation:	Unconjugated
Storage:	Store at -20°C as received.
Stability:	Stable for 12 months from date of receipt.
Predicted Protein Size:	59070 Da
Gene Name:	pre-mRNA processing factor 31
Database Link:	<a href="#">NP_056444</a> <a href="#">Entrez Gene 68988 Mouse</a> <a href="#">Entrez Gene 292536 Rat</a> <a href="#">Entrez Gene 476389 Dog</a> <a href="#">Entrez Gene 26121 Human</a> <a href="#">Q8WWY3</a>
Background:	This gene encodes a component of the spliceosome complex and is one of several retinitis pigmentosa-causing genes. When the gene product is added to the spliceosome complex, activation occurs.
Synonyms:	NY-BR-99; PRP31; RP11; SNRNP61


[View online »](#)

Protein Families: Druggable Genome

Protein Pathways: Spliceosome

### Product images:



TA302582 (1ug/ml) staining of HeLa cell lysate (35ug protein in RIPA buffer) with (B) and without (A) blocking with the immunising peptide. Primary incubation was 1 hour. Detected by chemiluminescence.