

## Product datasheet for **TA302580**

### Cyclophilin 40 (PPID) Goat Polyclonal Antibody

#### Product data:

Product Type:	Primary Antibodies
Applications:	WB
Recommended Dilution:	ELISA: 1:64,000. WB: 0.1-0.3µg/ml.
Reactivity:	Human (Expected from sequence similarity: Mouse, Rat, Dog)
Host:	Goat
Isotype:	IgG
Clonality:	Polyclonal
Immunogen:	Peptide with sequence C-DENFHYKHDREG, from the internal region of the protein sequence according to NP_005029.1.
Formulation:	Supplied at 0.5 mg/ml in Tris saline, 0.02% sodium azide, pH7.3 with 0.5% bovine serum albumin.
Concentration:	lot specific
Purification:	Purified from goat serum by ammonium sulphate precipitation followed by antigen affinity chromatography using the immunizing peptide. Supplied at 0.5 mg/ml in Tris saline, 0.02% sodium azide, pH7.3 with 0.5% bovine serum albumin.
Conjugation:	Unconjugated
Storage:	Store at -20°C as received.
Stability:	Stable for 12 months from date of receipt.
Predicted Protein Size:	44389 Da
Gene Name:	peptidylprolyl isomerase D
Database Link:	<a href="#">NP_005029</a> <a href="#">Entrez Gene 67738 Mouse</a> <a href="#">Entrez Gene 361967 Rat</a> <a href="#">Entrez Gene 475481 Dog</a> <a href="#">Entrez Gene 5481 Human</a> <a href="#">Q08752</a>



[View online »](#)

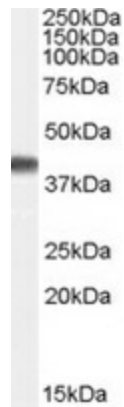
**Background:** The protein encoded by this gene is a member of the peptidyl-prolyl cis-trans isomerase (PPIase) family. PPIases catalyze the cis-trans isomerization of proline imidic peptide bonds in oligopeptides and accelerate the folding of proteins. This protein has been shown to possess PPIase activity and, similar to other family members, can bind to the immunosuppressant cyclosporin A. [provided by RefSeq]

**Synonyms:** CYP-40; CYPD

**Protein Families:** Stem cell - Pluripotency

**Protein Pathways:** Calcium signaling pathway, Huntington's disease, Parkinson's disease

### Product images:



TA302580 (0.1ug/ml) staining of Human Brain (Frontal Cortex) lysate (35ug protein in RIPA buffer). Primary incubation was 1 hour. Detected by chemiluminescence.