

Product datasheet for **TA302570**

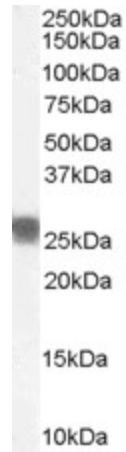
PHAPI2 / APRIL (ANP32B) Goat Polyclonal Antibody

Product data:

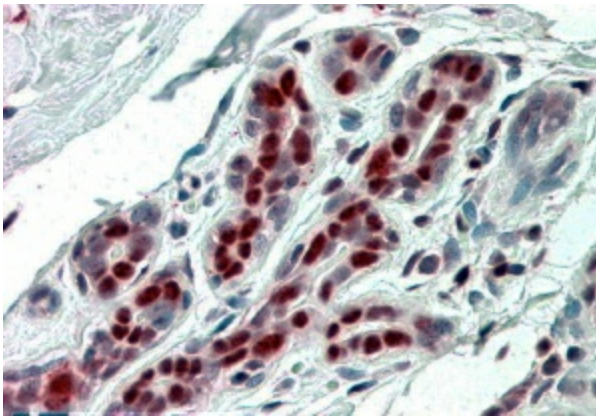
Product Type:	Primary Antibodies
Applications:	IHC, WB
Recommended Dilution:	WB: 0.1-0.3ug/ml; IHC: 3-5ug/ml; ELISA: 1:16,000
Reactivity:	Human (Expected from sequence similarity: Mouse, Rat, Dog, Pig, Cow)
Host:	Goat
Isotype:	IgG
Clonality:	Polyclonal
Immunogen:	Peptide with sequence C-KRKRETDDEGEDD, from the C Terminus of the protein sequence according to NP_006392.1.
Formulation:	Supplied at 0.5 mg/ml in Tris saline, 0.02% sodium azide, pH7.3 with 0.5% bovine serum albumin.
Concentration:	lot specific
Purification:	Purified from goat serum by ammonium sulphate precipitation followed by antigen affinity chromatography using the immunizing peptide. Supplied at 0.5 mg/ml in Tris saline, 0.02% sodium azide, pH7.3 with 0.5% bovine serum albumin.
Conjugation:	Unconjugated
Storage:	Store at -20°C as received.
Stability:	Stable for 12 months from date of receipt.
Predicted Protein Size:	32412 Da
Gene Name:	acidic nuclear phosphoprotein 32 family member B
Database Link:	NP_006392 Entrez Gene 67628 Mouse Entrez Gene 170724 Rat Entrez Gene 474775 Dog Entrez Gene 10541 Human Q92688
Synonyms:	APRIL; PHAPI2; SSP29



[View online »](#)

Product images:

TA302570 (0.1ug/ml) staining of Human Tonsil lysate (35ug protein in RIPA buffer). Primary incubated was 1 hour. Detected by chemiluminescence.



TA302570 (3.8ug/ml) staining of paraffin embedded Human Breast. Steamed antigen retrieval with citrate buffer pH 6, AP-staining.