

Product datasheet for **TA302569**

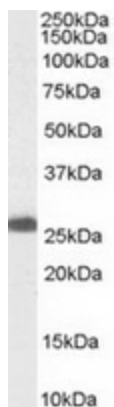
PGRMC1 Goat Polyclonal Antibody

Product data:

Product Type:	Primary Antibodies
Applications:	WB
Recommended Dilution:	ELISA: 1:4,000. WB: 0.03-0.1µg/ml.
Reactivity:	Human (Expected from sequence similarity: Mouse, Rat)
Host:	Goat
Isotype:	IgG
Clonality:	Polyclonal
Immunogen:	Peptide with sequence C-EPKDESARKND, from the C Terminus of the protein sequence according to NP_006658.1.
Formulation:	Supplied at 0.5 mg/ml in Tris saline, 0.02% sodium azide, pH7.3 with 0.5% bovine serum albumin.
Concentration:	lot specific
Purification:	Purified from goat serum by ammonium sulphate precipitation followed by antigen affinity chromatography using the immunizing peptide. Supplied at 0.5 mg/ml in Tris saline, 0.02% sodium azide, pH7.3 with 0.5% bovine serum albumin.
Conjugation:	Unconjugated
Storage:	Store at -20°C as received.
Stability:	Stable for 12 months from date of receipt.
Predicted Protein Size:	25294 Da
Gene Name:	progesterone receptor membrane component 1
Database Link:	NP_006658 Entrez Gene 53328 Mouse Entrez Gene 291948 Rat Entrez Gene 10857 Human O00264
Background:	Progesterone binding protein is a putative steroid membrane receptor. The protein is expressed predominantly in the liver and kidney. [provided by RefSeq]
Synonyms:	HPR6.6; MPR
Protein Families:	Druggable Genome, Nuclear Hormone Receptor, Transmembrane



[View online »](#)

Product images:

TA302569 (0.1ug/ml) staining of Human Liver lysate (35ug protein in RIPA buffer). Primary incubation was 1 hour. Detected by chemiluminescence.