

Product datasheet for **TA302559**

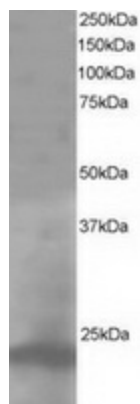
Pallidin (BLOC1S6) Goat Polyclonal Antibody

Product data:

Product Type:	Primary Antibodies
Applications:	WB
Recommended Dilution:	ELISA: 1:32,000. WB 1-3µg/ml.
Reactivity:	Human (Expected from sequence similarity: Mouse, Rat, Pig, Cow)
Host:	Goat
Isotype:	IgG
Clonality:	Polyclonal
Immunogen:	Peptide with sequence C-EREKQLTARPAKRM, from the C Terminus of the protein sequence according to NP_036520.
Formulation:	Supplied at 0.5 mg/ml in Tris saline, 0.02% sodium azide, pH7.3 with 0.5% bovine serum albumin.
Concentration:	lot specific
Purification:	Purified from goat serum by ammonium sulphate precipitation followed by antigen affinity chromatography using the immunizing peptide. Supplied at 0.5 mg/ml in Tris saline, 0.02% sodium azide, pH7.3 with 0.5% bovine serum albumin.
Conjugation:	Unconjugated
Storage:	Store at -20°C as received.
Stability:	Stable for 12 months from date of receipt.
Predicted Protein Size:	23366 Da
Gene Name:	biogenesis of lysosomal organelles complex 1 subunit 6
Database Link:	NP_036520 Entrez Gene 18457 Mouse Entrez Gene 317630 Rat Entrez Gene 26258 Human Q9UL45
Background:	The protein encoded by this gene may play a role in intracellular vesicle trafficking. It interacts with Syntaxin 13 which mediates intracellular membrane fusion. Several alternatively spliced transcript variants of this gene have been described, but the full-length nature of some of these variants has not been determined.
Synonyms:	BLOS6; HPS9; PA; PALLID; PLDN



[View online »](#)

Product images:

TA302559 staining (1ug/ml) of A431 lysate (RIPA buffer, 35ug total protein per lane). Primary incubated for 1 hour. Detected by western blot using chemiluminescence.