

Product datasheet for **TA302544**

c-Myb (MYB) Goat Polyclonal Antibody

Product data:

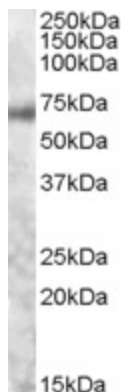
Product Type:	Primary Antibodies
Applications:	IHC, WB
Recommended Dilution:	ELISA: 1:1,000; WB: 0.5-2 ug/ml; IHC: 3-6 ug/ml
Reactivity:	Human (Expected from sequence similarity: Mouse, Rat, Dog)
Host:	Goat
Isotype:	IgG
Clonality:	Polyclonal
Immunogen:	Peptide with sequence C-QRHYNDEDPEKEKR, from the internal region of the protein sequence according to NP_005366.2.
Formulation:	Supplied at 0.5 mg/ml in Tris saline, 0.02% sodium azide, pH7.3 with 0.5% bovine serum albumin.
Concentration:	lot specific
Purification:	Purified from goat serum by ammonium sulphate precipitation followed by antigen affinity chromatography using the immunizing peptide. Supplied at 0.5 mg/ml in Tris saline, 0.02% sodium azide, pH7.3 with 0.5% bovine serum albumin.
Conjugation:	Unconjugated
Storage:	Store at -20°C as received.
Stability:	Stable for 12 months from date of receipt.
Predicted Protein Size:	75971 Da
Gene Name:	MYB proto-oncogene, transcription factor
Database Link:	NP_005366 Entrez Gene 17863 Mouse Entrez Gene 483995 Dog Entrez Gene 4602 Human P10242
Synonyms:	c-myb; c-myb_CDS; Cmyb; efg
Note:	In paraffin embedded Humam Kidney shows cytoplasm staining of renal tubules and in Human Breast cytoplasm staining of ductal epithelial cells. Data obtained from a previous batch (different goat).



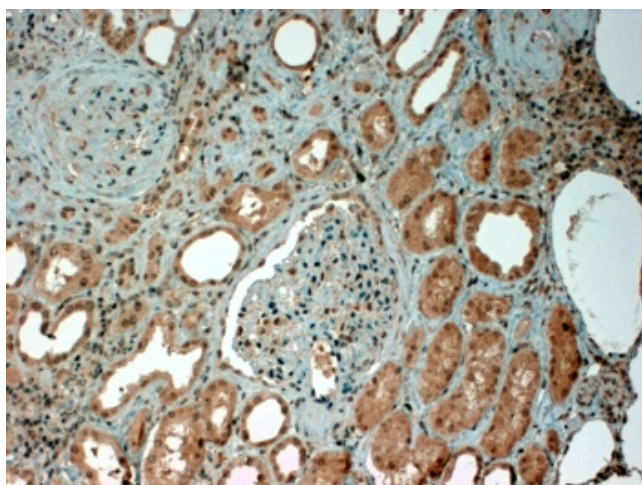
[View online »](#)

Protein Families: Druggable Genome, ES Cell Differentiation/IPS, Stem cell - Pluripotency, Transcription Factors

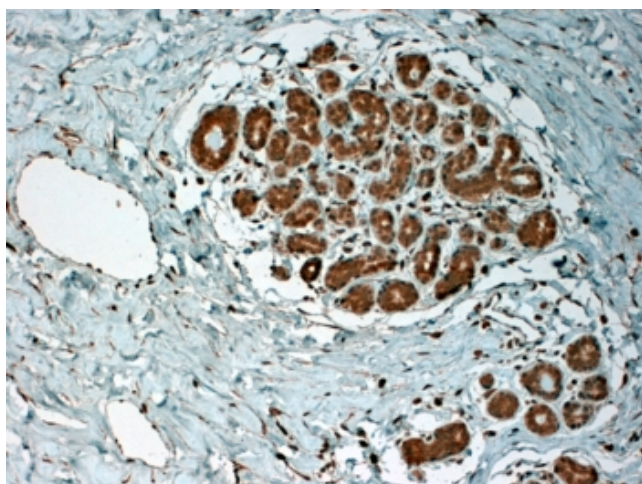
Product images:



TA302544 staining of Human Colon lysate (35ug protein in RIPA buffer). Primary incubation was 1 hour. Detected by chemiluminescence.



TA302544 (4ug/ml) staining of paraffin embedded Human Kidney. Steamed antigen retrieval with EDTA buffer pH 9, HRP-staining.



TA302544 (4ug/ml) staining of paraffin embedded Human Breast. Steamed antigen retrieval with citrate buffer pH 6, HRP-staining.