

## Product datasheet for TA302538

### MEPCE Goat Polyclonal Antibody

#### Product data:

Product Type:	Primary Antibodies
Applications:	IHC, WB
Recommended Dilution:	ELISA: 1:2,000. WB: 1-3ug/ml. IHC: 5-10ug/ml
Reactivity:	Human, Rat (Expected from sequence similarity: Mouse)
Host:	Goat
Isotype:	IgG
Clonality:	Polyclonal
Immunogen:	Peptide with sequence KQQRKFQYGN YCK, from the internal region of the protein sequence according to NP_062552.2.
Formulation:	Supplied at 0.5 mg/ml in Tris saline, 0.02% sodium azide, pH7.3 with 0.5% bovine serum albumin.
Concentration:	lot specific
Purification:	Purified from goat serum by ammonium sulphate precipitation followed by antigen affinity chromatography using the immunizing peptide. Supplied at 0.5 mg/ml in Tris saline, 0.02% sodium azide, pH7.3 with 0.5% bovine serum albumin.
Storage:	Store at -20°C as received.
Stability:	Stable for 12 months from date of receipt.
Predicted Protein Size:	77986 Da
Gene Name:	methylphosphate capping enzyme
Database Link:	<a href="#">NP_062552</a> Entrez Gene <a href="#">231803</a> MouseEntrez Gene <a href="#">304361</a> RatEntrez Gene <a href="#">56257</a> Human
Synonyms:	BCDIN3
Protein Families:	Druggable Genome

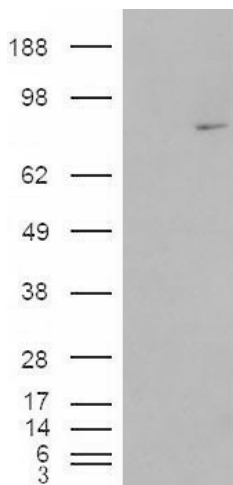


[View online »](#)

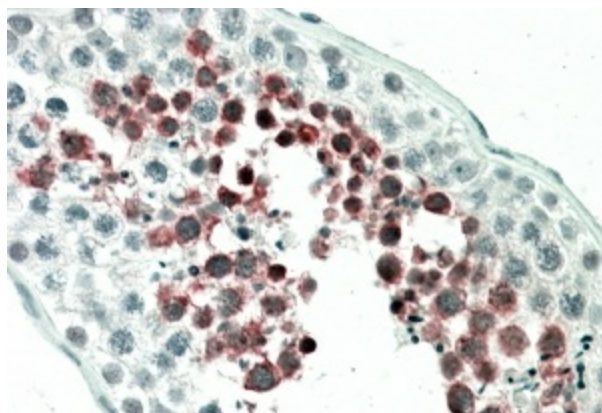
Product images:



TA302538 (1ug/ml) staining of Rat Testis lysate (35ug protein in RIPA buffer). Primary incubation was 1 hour. Detected by chemiluminescence.



HEK293 overexpressing MEPCE ([RC200948]) and probed with TA302538 (mock transfection in first lane)



TA302538 (5ug/ml) staining of paraffin embedded Human Testis. Steamed antigen retrieval with citrate buffer pH 6, AP-staining.