

Product datasheet for **TA302534**

Monoamine Oxidase B (MAOB) Goat Polyclonal Antibody

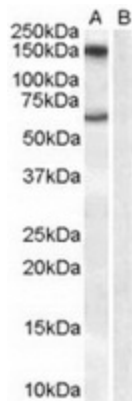
Product data:

| | |
|-------------------------|---|
| Product Type: | Primary Antibodies |
| Applications: | FC, IF, IHC, PEP-ELISA, WB |
| Recommended Dilution: | ELISA: 1:32,000. WB: 1-3µg/ml. |
| Reactivity: | Human (Expected from sequence similarity: Mouse, Rat, Dog, Pig, Cow) |
| Host: | Goat |
| Isotype: | IgG |
| Clonality: | Polyclonal |
| Immunogen: | Peptide with sequence C-HKARKLARLTKEE, from the internal region of the protein sequence according to NP_000889.3. |
| Formulation: | Supplied at 0.5 mg/ml in Tris saline, 0.02% sodium azide, pH7.3 with 0.5% bovine serum albumin. |
| Concentration: | lot specific |
| Purification: | Purified from goat serum by ammonium sulphate precipitation followed by antigen affinity chromatography using the immunizing peptide. Supplied at 0.5 mg/ml in Tris saline, 0.02% sodium azide, pH7.3 with 0.5% bovine serum albumin. |
| Conjugation: | Unconjugated |
| Storage: | Store at -20°C as received. |
| Stability: | Stable for 12 months from date of receipt. |
| Predicted Protein Size: | 62391 Da |
| Gene Name: | monoamine oxidase B |
| Database Link: | NP_000889 Entrez Gene 25750 Rat Entrez Gene 109731 Mouse Entrez Gene 403451 Dog Entrez Gene 4129 Human P27338 |



[View online »](#)

| | |
|--------------------------|--|
| Background: | The protein encoded by this gene belongs to the flavin monoamine oxidase family. It is a enzyme located in the mitochondrial outer membrane. It catalyzes the oxidative deamination of biogenic and xenobiotic amines and plays an important role in the metabolism of neuroactive and vasoactive amines in the central nervous system and peripheral tissues. This protein preferentially degrades benzylamine and phenylethylamine. [provided by RefSeq] |
| Synonyms: | MGC26382 |
| Protein Families: | Druggable Genome, Transmembrane |
| Protein Pathways: | Arginine and proline metabolism, Drug metabolism - cytochrome P450, Glycine, serine and threonine metabolism, Histidine metabolism, Metabolic pathways, Phenylalanine metabolism, Tryptophan metabolism, Tyrosine metabolism |

Product images:

TA302534 (1ug/ml) staining of Human Brain lysate (35ug protein in RIPA buffer) with (B) and without (A) blocking with the immunising peptide. Primary incubation was 1 hour. Detected by chemiluminescence.