

## Product datasheet for **TA302531**

### LNK (SH2B3) Goat Polyclonal Antibody

#### Product data:

Product Type:	Primary Antibodies
Applications:	WB
Recommended Dilution:	ELISA: 1:64,000. WB: 0.3-1.0 µg/ml.
Reactivity:	Human
Host:	Goat
Isotype:	IgG
Clonality:	Polyclonal
Immunogen:	Peptide with sequence NGPALQPSSPC, from the N Terminus of the protein sequence according to NP_005466.1.
Formulation:	Supplied at 0.5 mg/ml in Tris saline, 0.02% sodium azide, pH7.3 with 0.5% bovine serum albumin.
Concentration:	lot specific
Purification:	Purified from goat serum by ammonium sulphate precipitation followed by antigen affinity chromatography using the immunizing peptide. Supplied at 0.5 mg/ml in Tris saline, 0.02% sodium azide, pH7.3 with 0.5% bovine serum albumin.
Conjugation:	Unconjugated
Storage:	Store at -20°C as received.
Stability:	Stable for 12 months from date of receipt.
Predicted Protein Size:	66854 Da
Gene Name:	SH2B adaptor protein 3
Database Link:	<a href="#">NP_005466</a> <a href="#">Entrez Gene 10019 Human</a> <a href="#">Q9UQQ2</a>
Background:	T-cell activation requires stimulation of the T-cell receptor (TCR; see MIM 186880)-CD3 (see CD3Z; MIM 186780) complex, followed by recruitment of an array of intracellular signaling proteins (e.g., GRB2 (MIM 108355) and PLCG1 (MIM 172420)). Mediating the interaction between the extracellular receptors and intracellular signaling pathways are adaptor proteins such as LAT (MIM 602354), TRIM (MIM 604962), and LNK. [supplied by OMIM]

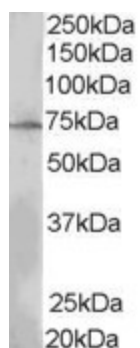


[View online »](#)

Synonyms: IDDM20; LNK

Protein Pathways: Neurotrophin signaling pathway

### Product images:



TA302531 (0.3ug/ml) staining of MOLT4 lysate (35ug protein in RIPA buffer). Primary incubation was 1 hour. Detected by chemiluminescence.