

## Product datasheet for TA302530

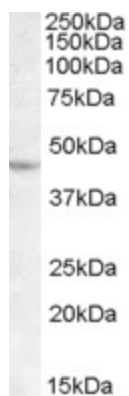
### LHX2 Goat Polyclonal Antibody

#### Product data:

Product Type:	Primary Antibodies
Applications:	WB
Recommended Dilution:	ELISA: 1:4,000. WB: 1-3µg/ml.
Reactivity:	Human (Expected from sequence similarity: Mouse, Rat, Dog)
Host:	Goat
Isotype:	IgG
Clonality:	Polyclonal
Immunogen:	Peptide with sequence C-NLEGHEPHSPSQ, from the C Terminus of the protein sequence according to NP_004780.3.
Formulation:	Supplied at 0.5 mg/ml in Tris saline, 0.02% sodium azide, pH7.3 with 0.5% bovine serum albumin.
Concentration:	lot specific
Purification:	Purified from goat serum by ammonium sulphate precipitation followed by antigen affinity chromatography using the immunizing peptide. Supplied at 0.5 mg/ml in Tris saline, 0.02% sodium azide, pH7.3 with 0.5% bovine serum albumin.
Storage:	Store at -20°C as received.
Stability:	Stable for 12 months from date of receipt.
Predicted Protein Size:	48000 Da
Gene Name:	LIM homeobox 2
Database Link:	<a href="#">NP_004780 Entrez Gene 16870 Mouse</a> <a href="#">Entrez Gene 296706 Rat</a> <a href="#">Entrez Gene 491340 Dog</a> <a href="#">Entrez Gene 9355 Human</a>
Background:	This gene encodes a protein belonging to a large protein family, members of which carry the LIM domain, a unique cysteine-rich zinc-binding domain. The encoded protein may function as a transcriptional regulator. The protein can recapitulate or rescue phenotypes in Drosophila caused by a related protein, suggesting conservation of function during evolution.
Synonyms:	hLhx2; LH2
Protein Families:	Transcription Factors



[View online »](#)

**Product images:**

TA302530 (1ug/ml) staining of DAUDI lysate (35ug protein in RIPA buffer). Primary incubation was 1 hour. Detected by chemiluminescence.