

## Product datasheet for **TA302529**

### Lactate Dehydrogenase C (LDHC) Goat Polyclonal Antibody

#### Product data:

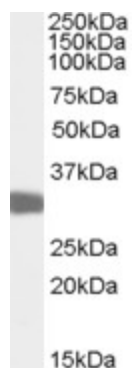
Product Type:	Primary Antibodies
Applications:	WB
Recommended Dilution:	ELISA: 1:16,000. WB: 0.03-0.1µg/ml. IHC: 1ug/ml.
Reactivity:	Mouse (Expected from sequence similarity: Human)
Host:	Goat
Isotype:	IgG
Clonality:	Polyclonal
Immunogen:	Peptide with sequence C-DSDKEHWKKNVHKQ, from the internal region of the protein sequence according to NP_002292.1; NP_059144.1.
Formulation:	Supplied at 0.5 mg/ml in Tris saline, 0.02% sodium azide, pH7.3 with 0.5% bovine serum albumin.
Purification:	Purified from goat serum by ammonium sulphate precipitation followed by antigen affinity chromatography using the immunizing peptide. Supplied at 0.5 mg/ml in Tris saline, 0.02% sodium azide, pH7.3 with 0.5% bovine serum albumin.
Conjugation:	Unconjugated
Storage:	Store at -20°C as received.
Stability:	Stable for 12 months from date of receipt.
Predicted Protein Size:	39937 Da
Gene Name:	lactate dehydrogenase C
Database Link:	<a href="#">NP_002292</a> <a href="#">Entrez Gene 16833 Mouse</a> <a href="#">Entrez Gene 3948 Human</a> <a href="#">P07864</a>
Background:	Lactate dehydrogenase C catalyzes the conversion of L-lactate and NAD to pyruvate and NADH in the final step of anaerobic glycolysis. LDHC is testis-specific and belongs to the lactate dehydrogenase family. Two transcript variants have been detected which differ in the 5' untranslated region. [provided by RefSeq]
Synonyms:	CT32; LDH3; LDHX



[View online »](#)

**Protein Pathways:** Cysteine and methionine metabolism, Glycolysis / Gluconeogenesis, Metabolic pathways, Propanoate metabolism, Pyruvate metabolism

**Product images:**



TA302529 (0.03ug/ml) staining of Mouse Testis lysate (35ug protein in RIPA buffer). Primary incubation was 1 hour. Detected by chemiluminescence.