

Product datasheet for **TA302526**

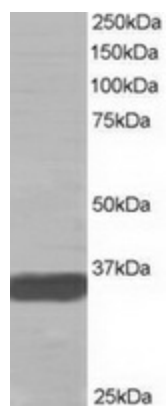
Mortality Factor 4 like 2 (MORF4L2) Goat Polyclonal Antibody

Product data:

Product Type:	Primary Antibodies
Applications:	WB
Recommended Dilution:	ELISA: 1:32,000. WB: 0.5-1.5µg/ml.
Reactivity:	Human (Expected from sequence similarity: Dog)
Host:	Goat
Isotype:	IgG
Clonality:	Polyclonal
Immunogen:	Peptide with sequence SSRKQGSQPRGQQS-C, from the N Terminus of the protein sequence according to NP_036418.1.
Formulation:	Supplied at 0.5 mg/ml in Tris saline, 0.02% sodium azide, pH7.3 with 0.5% bovine serum albumin.
Concentration:	lot specific
Purification:	Purified from goat serum by ammonium sulphate precipitation followed by antigen affinity chromatography using the immunizing peptide. Supplied at 0.5 mg/ml in Tris saline, 0.02% sodium azide, pH7.3 with 0.5% bovine serum albumin.
Conjugation:	Unconjugated
Storage:	Store at -20°C as received.
Stability:	Stable for 12 months from date of receipt.
Predicted Protein Size:	35932 Da
Gene Name:	mortality factor 4 like 2
Database Link:	NP_036418 Entrez Gene 481001 Dog Entrez Gene 9643 Human Q15014
Synonyms:	MORFL2; MRGX
Protein Families:	Transcription Factors



[View online »](#)

Product images:

TA302526 staining (0.2ug/ml) of A431 lysate (RIPA buffer, 35ug total protein per lane). Primary incubated for 1 hour. Detected by western blot using chemiluminescence.