

Product datasheet for **TA302524**

KPNA3 Goat Polyclonal Antibody

Product data:

| | |
|-------------------------|---|
| Product Type: | Primary Antibodies |
| Applications: | IHC, WB |
| Recommended Dilution: | ELISA: 1/32,000. WB: 0.1-0.5µg/ml. IHC: 5-10µg/ml. |
| Reactivity: | Human, Mouse, Rat (Expected from sequence similarity: Dog, Cow) |
| Host: | Goat |
| Isotype: | IgG |
| Clonality: | Polyclonal |
| Immunogen: | Peptide with sequence C-DPTANLQTKFNF, from the C Terminus of the protein sequence according to NP_002258. |
| Formulation: | Supplied at 0.5 mg/ml in Tris saline, 0.02% sodium azide, pH7.3 with 0.5% bovine serum albumin. |
| Concentration: | lot specific |
| Purification: | Purified from goat serum by ammonium sulphate precipitation followed by antigen affinity chromatography using the immunizing peptide. Supplied at 0.5 mg/ml in Tris saline, 0.02% sodium azide, pH7.3 with 0.5% bovine serum albumin. |
| Conjugation: | Unconjugated |
| Storage: | Store at -20°C as received. |
| Stability: | Stable for 12 months from date of receipt. |
| Predicted Protein Size: | 61439 Da |
| Gene Name: | karyopherin subunit alpha 3 |
| Database Link: | NP_002258 Entrez Gene 16648 Mouse Entrez Gene 361055 Rat Entrez Gene 476909 Dog Entrez Gene 3839 Human O00505 |



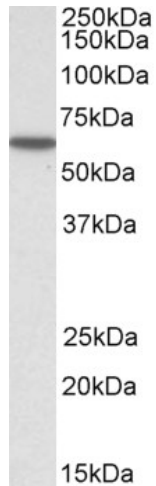
[View online »](#)

Background:

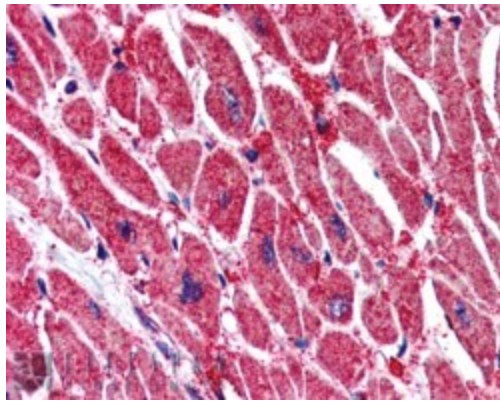
The transport of molecules between the nucleus and the cytoplasm in eukaryotic cells is mediated by the nuclear pore complex (NPC), which consists of 60-100 proteins. Small molecules (up to 70 kD) can pass through the nuclear pore by nonselective diffusion while larger molecules are transported by an active process. The protein encoded by this gene belongs to the importin alpha family, and is involved in nuclear protein import. [provided by RefSeq]

Synonyms:

hSRP1; IPOA4; SRP1; SRP1gamma; SRP4

Product images:


TA302524 (0.1ug/ml) staining of HeLa lysate (35ug protein in RIPA buffer). Primary incubation was 1 hour. Detected by chemiluminescence.



TA302524 (5ug/ml) staining of paraffin embedded Human Heart. Steamed antigen retrieval with citrate buffer pH 6, AP-staining. Data obtained from previous batch (goat)