

Product datasheet for **TA302522**

KLF15 Goat Polyclonal Antibody

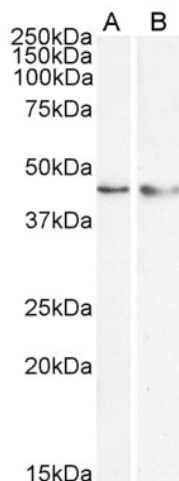
Product data:

Product Type:	Primary Antibodies
Applications:	FC, WB
Recommended Dilution:	ELISA: 1:64000. WB: 0.5-1.5µg/ml.
Reactivity:	Human (Expected from sequence similarity: Mouse, Rat, Pig)
Host:	Goat
Isotype:	IgG
Clonality:	Polyclonal
Immunogen:	Peptide with sequence VDHLLPVDFNFSS-C, from the N Terminus of the protein sequence according to NP_054798.1.
Formulation:	Supplied at 0.5 mg/ml in Tris saline, 0.02% sodium azide, pH7.3 with 0.5% bovine serum albumin.
Purification:	Purified from goat serum by ammonium sulphate precipitation followed by antigen affinity chromatography using the immunizing peptide. Supplied at 0.5 mg/ml in Tris saline, 0.02% sodium azide, pH7.3 with 0.5% bovine serum albumin.
Conjugation:	Unconjugated
Storage:	Store at -20°C as received.
Stability:	Stable for 12 months from date of receipt.
Predicted Protein Size:	47618 Da
Gene Name:	Kruppel-like factor 15
Database Link:	NP_054798 Entrez Gene 66277 Mouse Entrez Gene 85497 Rat Entrez Gene 28999 Human Q9UIH9
Synonyms:	KKLF
Protein Families:	Transcription Factors

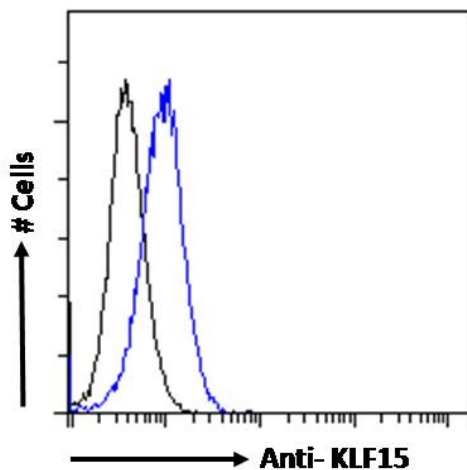


[View online »](#)

Product images:



TA302522 (1ug/ml) staining of nuclear HepG2 (A) and (0.5ug/ml) HeLa (B) cell lysate (35ug protein in RIPA buffer). Detected by chemiluminescence.



TA302522 Flow cytometric analysis of paraformaldehyde fixed HepG2 cells (blue line), permeabilized with 0.5% Triton. Primary incubation 1hr (10ug/ml) followed by Alexa Fluor 488 secondary antibody (1ug/ml). IgG control: Unimmunized goat IgG (black line) followed by Alexa Fluor 488 secondary antibody.