

Product datasheet for **TA302518**

IRF6 Goat Polyclonal Antibody

Product data:

Product Type:	Primary Antibodies
Applications:	IHC, WB
Recommended Dilution:	ELISA: 1/32,000. WB: 0.2-1 µg/ml. IHC: 5 µg/ml
Reactivity:	Human (Expected from sequence similarity: Mouse)
Host:	Goat
Isotype:	IgG
Clonality:	Polyclonal
Immunogen:	Peptide with sequence C-TPSMQLPPALPPQ, from the C Terminus of the protein sequence according to NP_006138.
Formulation:	Supplied at 0.5 mg/ml in Tris saline, 0.02% sodium azide, pH7.3 with 0.5% bovine serum albumin.
Concentration:	lot specific
Purification:	Purified from goat serum by ammonium sulphate precipitation followed by antigen affinity chromatography using the immunizing peptide. Supplied at 0.5 mg/ml in Tris saline, 0.02% sodium azide, pH7.3 with 0.5% bovine serum albumin.
Conjugation:	Unconjugated
Storage:	Store at -20°C as received.
Stability:	Stable for 12 months from date of receipt.
Predicted Protein Size:	56757 Da
Gene Name:	interferon regulatory factor 6
Database Link:	NP_006138 Entrez Gene 54139 Mouse Entrez Gene 3664 Human O14896
Background:	This gene encodes a member of the interferon regulatory transcription factor (IRF) family. Family members share a highly-conserved N-terminal helix-turn-helix DNA-binding domain and a less conserved C-terminal protein-binding domain. Mutations in this gene can cause van der Woude syndrome and popliteal pterygium syndrome. This protein is involved in palate formation. [provided by RefSeq]



[View online »](#)

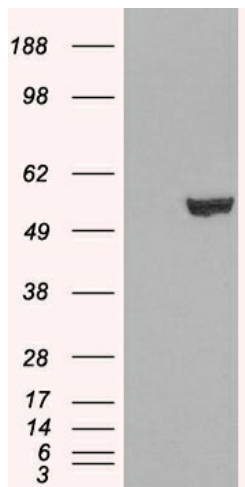
Synonyms: LPS; OFC6; PIT; PPS; PPS1; VWS; VWS1

Protein Families: ES Cell Differentiation/IPS, Transcription Factors

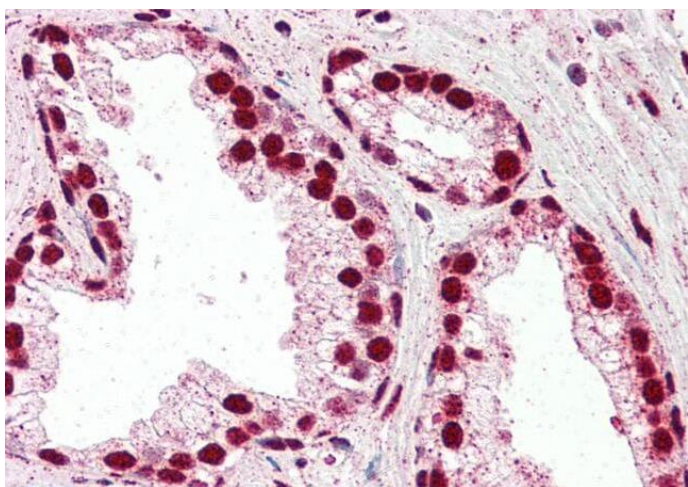
Product images:



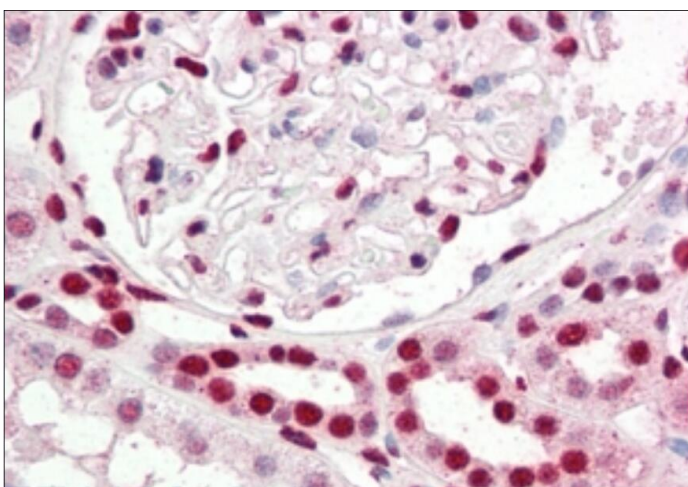
TA302518 staining (0.2ug/ml) of Human Ovary lysate (RIPA buffer, 35ug total protein per lane). Primary incubated for 1 hour. Detected by chemiluminescence.



HEK293 overexpressing IRF6 ([RC201579]) and probed with TA302518 (mock transfection in first lane), tested by Origene.



TA302518 (2.5ug/ml) staining of paraffin embedded Human Kidney. Steamed antigen retrieval with citrate buffer pH 6, AP-staining.



TA302518 (5ug/ml) staining of paraffin embedded Human Prostate. Steamed antigen retrieval with citrate buffer pH 6, AP-staining.