

Product datasheet for **TA302505**

HADHSC (HADH) Goat Polyclonal Antibody

Product data:

Product Type:	Primary Antibodies
Applications:	WB
Recommended Dilution:	ELISA: 1:64,000. WB: 0.01-0.03µg/ml.
Reactivity:	Human (Expected from sequence similarity: Mouse, Rat, Dog)
Host:	Goat
Isotype:	IgG
Clonality:	Polyclonal
Immunogen:	Peptide with sequence C-YERGDASKEDID, from the internal region of the protein sequence according to NP_005318.2.
Formulation:	Supplied at 0.5 mg/ml in Tris saline, 0.02% sodium azide, pH7.3 with 0.5% bovine serum albumin.
Concentration:	lot specific
Purification:	Purified from goat serum by ammonium sulphate precipitation followed by antigen affinity chromatography using the immunizing peptide. Supplied at 0.5 mg/ml in Tris saline, 0.02% sodium azide, pH7.3 with 0.5% bovine serum albumin.
Conjugation:	Unconjugated
Storage:	Store at -20°C as received.
Stability:	Stable for 12 months from date of receipt.
Predicted Protein Size:	37918 Da
Gene Name:	hydroxyacyl-CoA dehydrogenase
Database Link:	NP_005318 Entrez Gene 15107 Mouse Entrez Gene 113965 Rat Entrez Gene 478506 Dog Entrez Gene 3033 Human Q16836



[View online »](#)

Background:

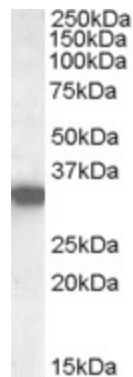
This gene is a member of the 3-hydroxyacyl-CoA dehydrogenase gene family. The encoded protein functions in the mitochondrial matrix to catalyze the oxidation of straight-chain 3-hydroxyacyl-CoAs as part of the beta-oxidation pathway. Its enzymatic activity is highest with medium-chain-length fatty acids. Mutations in this gene cause one form of familial hyperinsulinemic hypoglycemia. The human genome contains a related pseudogene. [provided by RefSeq]

Synonyms:

HAD; HADH1; HADHSC; HCDH; HHF4; MSCHAD; SCHAD

Protein Pathways:

Butanoate metabolism, Fatty acid elongation in mitochondria, Fatty acid metabolism, Lysine degradation, Metabolic pathways, Tryptophan metabolism, Valine, leucine and isoleucine degradation

Product images:

TA302505 (0.02ug/ml) staining of Human Kidney lysate (35ug protein in RIPA buffer). Primary incubation was 1 hour. Detected by chemiluminescence.