

Product datasheet for **TA302501**

GRAP2 Goat Polyclonal Antibody

Product data:

Product Type:	Primary Antibodies
Applications:	WB
Recommended Dilution:	WB: 0.2-1µg/ml.
Reactivity:	Human (Expected from sequence similarity: Mouse, Rat, Dog, Pig, Cow)
Host:	Goat
Isotype:	IgG
Clonality:	Polyclonal
Immunogen:	Peptide with sequence C-GLFPANYVAPMTR, from the C Terminus of the protein sequence according to NP_004801.1.
Formulation:	Supplied at 0.5 mg/ml in Tris saline, 0.02% sodium azide, pH7.3 with 0.5% bovine serum albumin.
Concentration:	lot specific
Purification:	Purified from goat serum by ammonium sulphate precipitation followed by antigen affinity chromatography using the immunizing peptide. Supplied at 0.5 mg/ml in Tris saline, 0.02% sodium azide, pH7.3 with 0.5% bovine serum albumin.
Conjugation:	Unconjugated
Storage:	Store at -20°C as received.
Stability:	Stable for 12 months from date of receipt.
Predicted Protein Size:	41534 Da
Gene Name:	GRB2-related adaptor protein 2
Database Link:	NP_004801 Entrez Gene 17444 Mouse Entrez Gene 366962 Rat Entrez Gene 481241 Dog Entrez Gene 9402 Human O75791



[View online »](#)

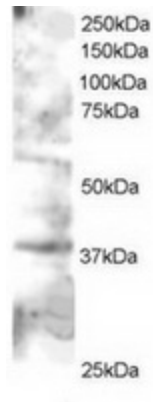
Background: This gene encodes a member of the GRB2/Sem5/Drk family. This member is an adaptor-like protein involved in leukocyte-specific protein-tyrosine kinase signaling. Like its related family member, GRB2-related adaptor protein (GRAP), this protein contains an SH2 domain flanked by two SH3 domains. This protein interacts with other proteins, such as GRB2-associated binding protein 1 (GAB1) and the SLP-76 leukocyte protein (LCP2), through its SH3 domains. Transcript variants utilizing alternative polyA sites exist. [provided by RefSeq]

Synonyms: GADS; GRAP-2; GRB2L; GRBLG; GrbX; Grf40; GRID; GRPL; Mona; P38

Protein Families: Druggable Genome

Protein Pathways: T cell receptor signaling pathway

Product images:



TA302501 staining (0.5ug/ml) of Jurkat lysate (RIPA buffer, 30ug total protein per lane). Primary incubated for 1 hour. Detected by western blot using chemiluminescence.