

Product datasheet for **TA302500**

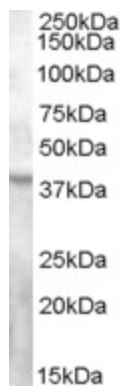
GPR119 Goat Polyclonal Antibody

Product data:

Product Type:	Primary Antibodies
Applications:	WB
Recommended Dilution:	ELISA: 1:2,000. WB: 0.3-1 µg/ml.
Reactivity:	Human (Expected from sequence similarity: Mouse, Pig)
Host:	Goat
Isotype:	IgG
Clonality:	Polyclonal
Immunogen:	Peptide with sequence SARNCGPERPRESS, from the C Terminus (near) of the protein sequence according to NP_848566.1.
Formulation:	Supplied at 0.5 mg/ml in Tris saline, 0.02% sodium azide, pH7.3 with 0.5% bovine serum albumin.
Purification:	Purified from goat serum by ammonium sulphate precipitation followed by antigen affinity chromatography using the immunizing peptide. Supplied at 0.5 mg/ml in Tris saline, 0.02% sodium azide, pH7.3 with 0.5% bovine serum albumin.
Conjugation:	Unconjugated
Storage:	Store at -20°C as received.
Stability:	Stable for 12 months from date of receipt.
Predicted Protein Size:	40514 Da
Gene Name:	G protein-coupled receptor 119
Database Link:	NP_848566 Entrez Gene 236781 Mouse Entrez Gene 139760 Human Q8TDV5
Background:	GPR119 is a member of the rhodopsin family of G protein-coupled receptors (GPRs) (Fredriksson et al., 2003 [PubMed 14623098]). [supplied by OMIM]
Synonyms:	GPCR2
Protein Families:	Druggable Genome, GPCR, Transmembrane



[View online »](#)

Product images:

TA302500 (0.3ug/ml) staining of Human Ovary lysate (35ug protein in RIPA buffer). Primary incubation was 1 hour. Detected by chemiluminescence.