

Product datasheet for **TA302498**

GDF15 Goat Polyclonal Antibody

Product data:

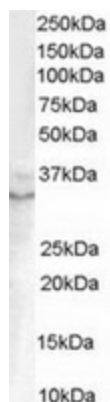
Product Type:	Primary Antibodies
Applications:	WB
Recommended Dilution:	ELISA: 1:2,000. WB: 0.1-0.3µg/ml.
Reactivity:	Human (Expected from sequence similarity: Mouse, Rat)
Host:	Goat
Isotype:	IgG
Clonality:	Polyclonal
Immunogen:	Peptide with sequence C-QKTDTGVSLSLQTYDD, from the C Terminus of the protein sequence according to NP_004855.1.
Formulation:	Supplied at 0.5 mg/ml in Tris saline, 0.02% sodium azide, pH7.3 with 0.5% bovine serum albumin.
Purification:	Purified from goat serum by ammonium sulphate precipitation followed by antigen affinity chromatography using the immunizing peptide. Supplied at 0.5 mg/ml in Tris saline, 0.02% sodium azide, pH7.3 with 0.5% bovine serum albumin.
Conjugation:	Unconjugated
Storage:	Store at -20°C as received.
Stability:	Stable for 12 months from date of receipt.
Predicted Protein Size:	37765 Da
Gene Name:	growth differentiation factor 15
Database Link:	NP_004855 Entrez Gene 23886 Mouse Entrez Gene 29455 Rat Entrez Gene 9518 Human Q99988
Background:	Bone morphogenetic proteins (e.g., BMP5; MIM 112265) are members of the transforming growth factor-beta (see TGFB1; MIM 190180) superfamily and regulate tissue differentiation and maintenance. They are synthesized as precursor molecules that are processed at a dibasic cleavage site to release C-terminal domains containing a characteristic motif of 7 conserved cysteines in the mature protein. [supplied by OMIM]
Synonyms:	GDF-15; MIC-1; MIC1; NAG-1; PDF; PLAB; PTGFB



[View online »](#)

Protein Families: Druggable Genome, Secreted Protein

Product images:



TA302498 (0.1ug/ml) staining of Human Prostate lysate (35ug protein in RIPA buffer). Primary incubation was 1 hour. Detected by chemiluminescence.