

Product datasheet for **TA302494**

GPSM2 Goat Polyclonal Antibody

Product data:

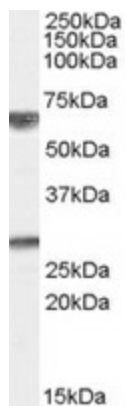
Product Type:	Primary Antibodies
Applications:	WB
Recommended Dilution:	ELISA: 1:64,000. WB: 0.01-0.03µg/ml.
Reactivity:	Human (Expected from sequence similarity: Dog)
Host:	Goat
Isotype:	IgG
Clonality:	Polyclonal
Immunogen:	Peptide with sequence C-NRLKGKKYKTNSTK, from the internal region of the protein sequence according to NP_037428.2.
Formulation:	Supplied at 0.5 mg/ml in Tris saline, 0.02% sodium azide, pH7.3 with 0.5% bovine serum albumin.
Concentration:	lot specific
Purification:	Purified from goat serum by ammonium sulphate precipitation followed by antigen affinity chromatography using the immunizing peptide. Supplied at 0.5 mg/ml in Tris saline, 0.02% sodium azide, pH7.3 with 0.5% bovine serum albumin.
Conjugation:	Unconjugated
Storage:	Store at -20°C as received.
Stability:	Stable for 12 months from date of receipt.
Predicted Protein Size:	80293 Da
Gene Name:	G-protein signaling modulator 2
Database Link:	NP_037428 Entrez Gene 490127 Dog Entrez Gene 29899 Human P81274
Background:	Heterotrimeric G proteins transduce extracellular signals received by cell surface receptors into integrated cellular responses. GPSM2 belongs to a group of proteins that modulate activation of G proteins (Blumer et al., 2002 [PubMed 11832491]). [supplied by OMIM]. COMPLETENESS: complete on the 3' end.
Synonyms:	CMCS; DFNB82; LGN; PINS



[View online »](#)

Protein Families: Druggable Genome

Product images:



TA302494 (0.01ug/ml) staining of Human Brain (Cerebellum) lysate (35ug protein in RIPA buffer). Primary incubation was 1 hour. Detected by chemiluminescence.