

Product datasheet for **TA302490**

Esa1 (FLOT2) Goat Polyclonal Antibody

Product data:

Product Type:	Primary Antibodies
Applications:	WB
Recommended Dilution:	ELISA: 1:32,000. WB: 0.1-0.3µg/ml.
Reactivity:	Human (Expected from sequence similarity: Dog, Cow)
Host:	Goat
Isotype:	IgG
Clonality:	Polyclonal
Immunogen:	Peptide with sequence C-SKIPLIKKATGVQV, from the C Terminus of the protein sequence according to NP_004466.2.
Formulation:	Supplied at 0.5 mg/ml in Tris saline, 0.02% sodium azide, pH7.3 with 0.5% bovine serum albumin.
Concentration:	lot specific
Purification:	Purified from goat serum by ammonium sulphate precipitation followed by antigen affinity chromatography using the immunizing peptide. Supplied at 0.5 mg/ml in Tris saline, 0.02% sodium azide, pH7.3 with 0.5% bovine serum albumin.
Conjugation:	Unconjugated
Storage:	Store at -20°C as received.
Stability:	Stable for 12 months from date of receipt.
Predicted Protein Size:	50691 Da
Gene Name:	flotillin 2
Database Link:	NP_004466 Entrez Gene 100856195 Dog Entrez Gene 2319 Human Q14254
Background:	Caveolae are small domains on the inner cell membrane involved in vesicular trafficking and signal transduction. This gene encodes a caveolae-associated, integral membrane protein, which is thought to function in neuronal signaling. [provided by RefSeq]
Synonyms:	ECS-1; ECS1; ESA; ESA1; M17S1

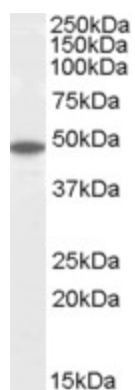


[View online »](#)

Protein Families: Druggable Genome

Protein Pathways: Insulin signaling pathway

Product images:



TA302490 (0.1ug/ml) staining of Human Brain (Cerebellum) lysate (35ug protein in RIPA buffer). Primary incubation was 1 hour. Detected by chemiluminescence.