

Product datasheet for **TA302489**

Flotillin 1 (FLOT1) Goat Polyclonal Antibody

Product data:

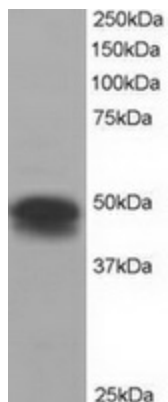
Product Type:	Primary Antibodies
Applications:	IHC, WB
Recommended Dilution:	WB: 0.3-1ug/ml; IHC: 3-5ug/ml; ELISA: 1:32,000
Reactivity:	Human (Expected from sequence similarity: Dog, Pig, Cow)
Host:	Goat
Isotype:	IgG
Clonality:	Polyclonal
Immunogen:	Peptide with sequence C-SISQVNHKPLRTA, from the C Terminus of the protein sequence according to NP_005794.
Formulation:	Supplied at 0.5 mg/ml in Tris saline, 0.02% sodium azide, pH7.3 with 0.5% bovine serum albumin.
Concentration:	lot specific
Purification:	Purified from goat serum by ammonium sulphate precipitation followed by antigen affinity chromatography using the immunizing peptide. Supplied at 0.5 mg/ml in Tris saline, 0.02% sodium azide, pH7.3 with 0.5% bovine serum albumin.
Conjugation:	Unconjugated
Storage:	Store at -20°C as received.
Stability:	Stable for 12 months from date of receipt.
Predicted Protein Size:	50982 Da
Gene Name:	flotillin 1
Database Link:	NP_005794 Entrez Gene 474831 Dog Entrez Gene 10211 Human O75955
Background:	Caveolae are small domains on the inner cell membrane involved in vesicular trafficking and signal transduction. FLOT1 encodes a caveolae-associated, integral membrane protein. The function of flotillin 1 has not been determined. [provided by RefSeq]
Synonyms:	flotillin 1; integral membrane component of caveolae; OTTHUMP00000029208



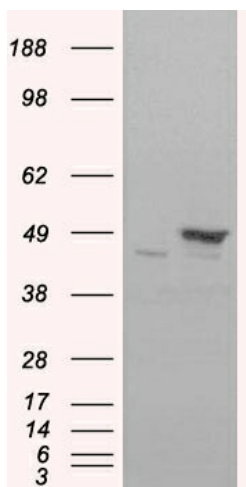
[View online »](#)

Protein Pathways: Insulin signaling pathway

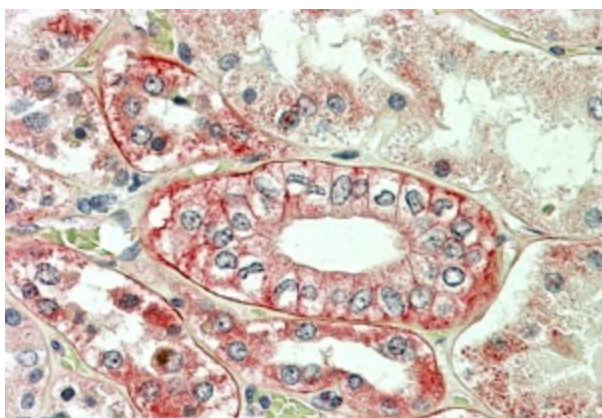
Product images:



TA302489 staining (0.3ug/ml) of H460 lysate (RIPA buffer, 35ug total protein per lane). Primary incubated for 1 hour. Detected by western blot using chemiluminescence.



HEK293 overexpressing FLOT1 ([RC200231]) and probed with TA302489 (mock transfection in first lane).



TA302489 (3.8ug/ml) staining of paraffin embedded Human Kidney. Steamed antigen retrieval with citrate buffer pH 6, AP-staining.