

## Product datasheet for **TA302486**

### FHL1 Goat Polyclonal Antibody

#### Product data:

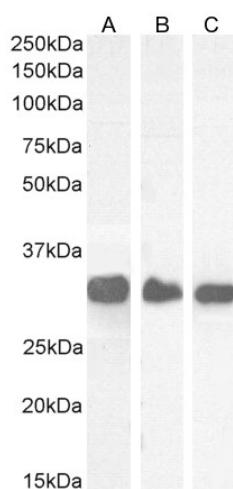
Product Type:	Primary Antibodies
Applications:	FC, IF, PEP-ELISA, WB
Recommended Dilution:	<b>Peptide ELISA:</b> antibody detection limit dilution 1:32000. <b>Western blot:</b> Approx 32kDa band observed in Mouse and Rat Skeletal Muscle and in Rat Lung lysates (calculated MW of 31.9kDa according to Mouse NP_001274729.1 and Rat NP_001258128.1). Recommended concentration: 0.1-0.3µg/ml. Primary incubation 1 hour at room temperature.
Reactivity:	Mouse, Rat
Host:	Goat
Isotype:	IgG
Clonality:	Polyclonal
Immunogen:	Peptide with sequence CNKRFVFNHNEQVY, from the internal region of the protein sequence according to NP_001070830.1; NP_001274729.1.
Formulation:	Supplied at 0.5 mg/ml in Tris saline, 0.02% sodium azide, pH7.3 with 0.5% bovine serum albumin.
Concentration:	lot specific
Purification:	Purified from goat serum by ammonium sulphate precipitation followed by antigen affinity chromatography using the immunizing peptide.
Conjugation:	Unconjugated
Storage:	Store at -20°C as received.
Stability:	Stable for 12 months from date of receipt.
Predicted Protein Size:	35519 Da
Gene Name:	four and a half LIM domains 1
Database Link:	<a href="#">NP_001399939</a> <a href="#">Q13642</a>
Background:	LIM proteins, named for 'LIN11, ISL1, and MEC3,' are defined by the possession of a highly conserved double zinc finger motif called the LIM domain. [supplied by OMIM]
Synonyms:	FHL-1; FHL1A; FHL1B; FLH1A; KYOT; SLIM; SLIM-1; SLIM1; SLIMMER; XMPMA



[View online »](#)

**Note:** This antibody is expected to recognize Mouse NP\_001070830.1 iso 2 , NP\_001274729.1 iso 3 and Rat NP\_001029098.1 iso 1, NP\_001258128.1 iso 3.

**Product images:**



TA302486 (0.1 µg/ml) staining of Mouse Skeletal Muscle (A), Rat Lung (B) and Rat Skeletal Muscle (C) lysate (35 µg protein in RIPA buffer). Detected by chemiluminescence.