

## Product datasheet for **TA302485**

### FGR Goat Polyclonal Antibody

#### Product data:

Product Type:	Primary Antibodies
Applications:	WB
Recommended Dilution:	WB: 0.5-2µg/ml.
Reactivity:	Mouse (Expected from sequence similarity: Human, Rat, Dog)
Host:	Goat
Isotype:	IgG
Clonality:	Polyclonal
Immunogen:	Peptide with sequence C-TSAEPQYQPGDQT, from the C Terminus of the protein sequence according to NP_005239.
Formulation:	Supplied at 0.5 mg/ml in Tris saline, 0.02% sodium azide, pH7.3 with 0.5% bovine serum albumin.
Concentration:	lot specific
Purification:	Purified from goat serum by ammonium sulphate precipitation followed by antigen affinity chromatography using the immunizing peptide. Supplied at 0.5 mg/ml in Tris saline, 0.02% sodium azide, pH7.3 with 0.5% bovine serum albumin.
Conjugation:	Unconjugated
Storage:	Store at -20°C as received.
Stability:	Stable for 12 months from date of receipt.
Predicted Protein Size:	63107 Da
Gene Name:	FGR proto-oncogene, Src family tyrosine kinase
Database Link:	<a href="#">NP_005239</a> <a href="#">Entrez Gene 14191 Mouse</a> <a href="#">Entrez Gene 79113 Rat</a> <a href="#">Entrez Gene 487341 Dog</a> <a href="#">Entrez Gene 2268 Human</a> <a href="#">P09769</a>



[View online »](#)

**Background:**

This gene is a member of the Src family of protein tyrosine kinases (PTKs). The encoded protein contains N-terminal sites for myristylation and palmylation, a PTK domain, and SH2 and SH3 domains which are involved in mediating protein-protein interactions with phosphotyrosine-containing and proline-rich motifs, respectively. The protein localizes to plasma membrane ruffles, and functions as a negative regulator of cell migration and adhesion triggered by the beta-2 integrin signal transduction pathway. Infection with Epstein-Barr virus results in the overexpression of this gene. Multiple alternatively spliced variants, encoding the same protein, have been identified. [provided by RefSeq]

**Synonyms:**

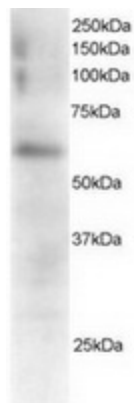
c-fgr; c-src2; p55-Fgr; p55c-fgr; p58-Fgr; p58c-fgr; SRC2

**Protein Families:**

Druggable Genome, Protein Kinase

**Protein Pathways:**

Chemokine signaling pathway

**Product images:**

TA302485 staining (0.5ug/ml) of Mouse Spleen extracts (RIPA buffer, 35ug total protein per lane). Primary incubated for 1 hour. Detected by western blot using chemiluminescence.