

## Product datasheet for **TA302483**

### FANCG Goat Polyclonal Antibody

#### Product data:

Product Type:	Primary Antibodies
Applications:	IHC, WB
Recommended Dilution:	ELISA: 1:32,000. WB: 0.5-1 µg/ml. IHC: 3 µg/ml
Reactivity:	Human (Expected from sequence similarity: Dog, Pig)
Host:	Goat
Isotype:	IgG
Clonality:	Polyclonal
Immunogen:	Peptide with sequence LEEFRTSLPKSCDL, from the C Terminus of the protein sequence according to NP_004620.1.
Formulation:	Supplied at 0.5 mg/ml in Tris saline, 0.02% sodium azide, pH7.3 with 0.5% bovine serum albumin.
Concentration:	lot specific
Purification:	Purified from goat serum by ammonium sulphate precipitation followed by antigen affinity chromatography using the immunizing peptide. Supplied at 0.5 mg/ml in Tris saline, 0.02% sodium azide, pH7.3 with 0.5% bovine serum albumin.
Conjugation:	Unconjugated
Storage:	Store at -20°C as received.
Stability:	Stable for 12 months from date of receipt.
Predicted Protein Size:	72184 Da
Gene Name:	Fanconi anemia complementation group G
Database Link:	<a href="#">NP_004620</a> <a href="#">Entrez Gene 611887 Dog</a> <a href="#">Entrez Gene 2189 Human</a> <a href="#">O15287</a>



[View online »](#)

**Background:**

The Fanconi anemia complementation group (FANC) currently includes FANCA, FANCB, FANCC, FANCD1 (also called BRCA2), FANCD2, FANCE, FANCF, FANCG, FANCI, FANCI (also called BRIP1), FANCL, FANCM and FANCN (also called PALB2). The previously defined group FANCH is the same as FANCA. Fanconi anemia is a genetically heterogeneous recessive disorder characterized by cytogenetic instability, hypersensitivity to DNA crosslinking agents, increased chromosomal breakage, and defective DNA repair. The members of the Fanconi anemia complementation group do not share sequence similarity; they are related by their assembly into a common nuclear protein complex. This gene encodes the protein for complementation group G. [provided by RefSeq]

**Synonyms:**

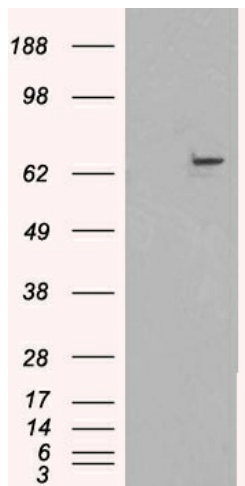
FAG; XRCC9

**Protein Families:**

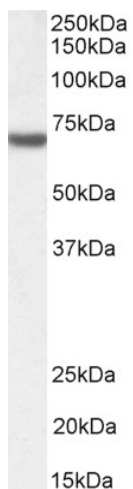
Druggable Genome

**Product images:**

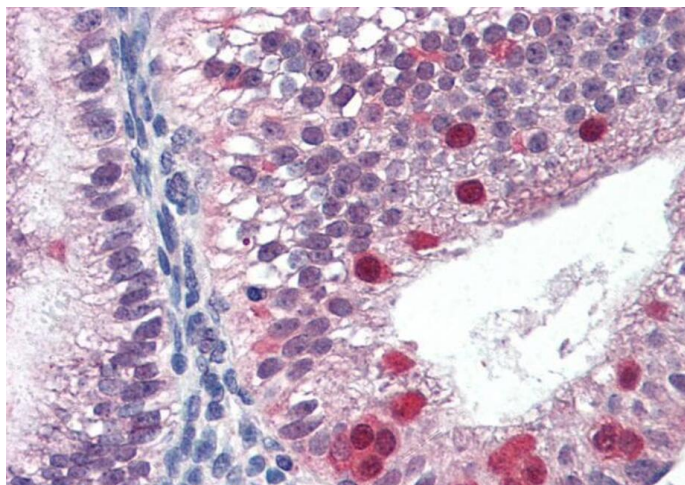

TA302483 (0.5ug/ml) staining of HeLa cell lysate (35ug protein in RIPA buffer). Primary incubation was 1 hour. Detected by chemiluminescence.



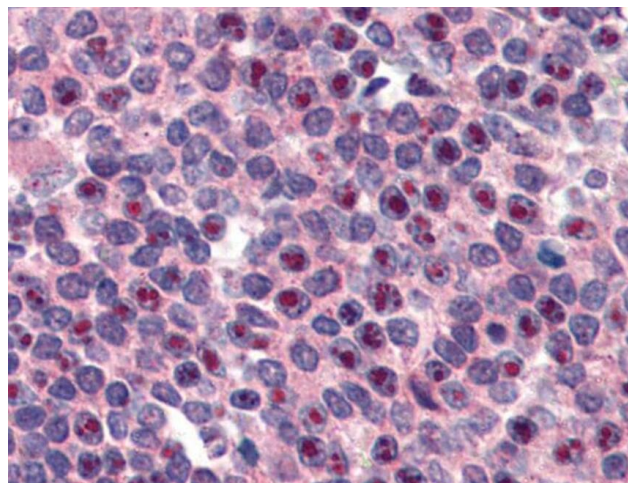
HEK293 overexpressing FANCG ([RC202443]) and probed with TA302483 (mock transfection in first lane), tested by Origene.



TA302483 (1ug/ml) staining of Jurkat nuclear lysate (35ug protein in RIPA buffer). Primary incubation was 1 hour. Detected by chemiluminescence.



TA302483 (3ug/ml) staining of paraffin embedded Human Uterus. Steamed antigen retrieval with citrate buffer pH 6, AP-staining.



TA302483 (3ug/ml) staining of paraffin embedded Human Spleen. Steamed antigen retrieval with citrate buffer pH 6, AP-staining.