

Product datasheet for **TA302482**

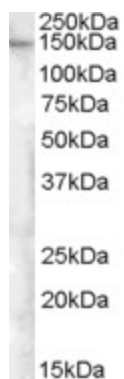
FAM62A (ESYT1) Goat Polyclonal Antibody

Product data:

Product Type:	Primary Antibodies
Applications:	IHC, PEP-ELISA
Recommended Dilution:	ELISA: 1:8,000. WB: 1-3µg/ml.IHC:3.75µg/ml
Reactivity:	Human (Expected from sequence similarity: Mouse, Rat, Dog, Cow)
Host:	Goat
Isotype:	IgG
Clonality:	Polyclonal
Immunogen:	Peptide with sequence C-QKKRTLSPFNER, from the internal region of the protein sequence according to NP_056107.1.
Formulation:	Supplied at 0.5 mg/ml in Tris saline, 0.02% sodium azide, pH7.3 with 0.5% bovine serum albumin.
Concentration:	lot specific
Purification:	Purified from goat serum by ammonium sulphate precipitation followed by antigen affinity chromatography using the immunizing peptide. Supplied at 0.5 mg/ml in Tris saline, 0.02% sodium azide, pH7.3 with 0.5% bovine serum albumin.
Conjugation:	Unconjugated
Storage:	Store at -20°C as received.
Stability:	Stable for 12 months from date of receipt.
Predicted Protein Size:	126494 Da
Gene Name:	extended synaptotagmin protein 1
Database Link:	NP_056107 Entrez Gene 23943 Mouse Entrez Gene 29579 Rat Entrez Gene 474397 Dog Entrez Gene 23344 Human Q9BSJ8
Synonyms:	FAM62A; MBC2
Protein Families:	Druggable Genome, Transmembrane



[View online »](#)

Product images:

TA302482 (0.5ug/ml) staining of Human Adipose lysate (35ug protein in RIPA buffer). Primary incubation was 1 hour. Detected by chemiluminescence.