

Product datasheet for **TA302473**

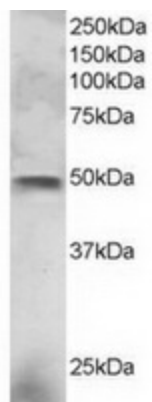
ESE1 (ELF3) Goat Polyclonal Antibody

Product data:

Product Type:	Primary Antibodies
Applications:	WB
Recommended Dilution:	WB: 2-4µg/ml.
Reactivity:	Human
Host:	Goat
Isotype:	IgG
Clonality:	Polyclonal
Immunogen:	Peptide with sequence C-SGWKEEEVLQSRN, from the C Terminus of the protein sequence according to NP_004424.2.
Formulation:	Supplied at 0.5 mg/ml in Tris saline, 0.02% sodium azide, pH7.3 with 0.5% bovine serum albumin.
Concentration:	lot specific
Purification:	Purified from goat serum by ammonium sulphate precipitation followed by antigen affinity chromatography using the immunizing peptide. Supplied at 0.5 mg/ml in Tris saline, 0.02% sodium azide, pH7.3 with 0.5% bovine serum albumin.
Conjugation:	Unconjugated
Storage:	Store at -20°C as received.
Stability:	Stable for 12 months from date of receipt.
Predicted Protein Size:	45080 Da
Gene Name:	E74 like ETS transcription factor 3
Database Link:	NP_004424 Entrez Gene 1999 Human P78545
Synonyms:	EPR-1; ERT; ESE-1; ESX
Protein Families:	Transcription Factors



[View online »](#)

Product images:

TA302473 staining (3ug/ml) of NCI-H460 lysate (RIPA buffer, 30ug total protein per lane). Primary incubated for 1 hour. Detected by western blot using chemiluminescence.